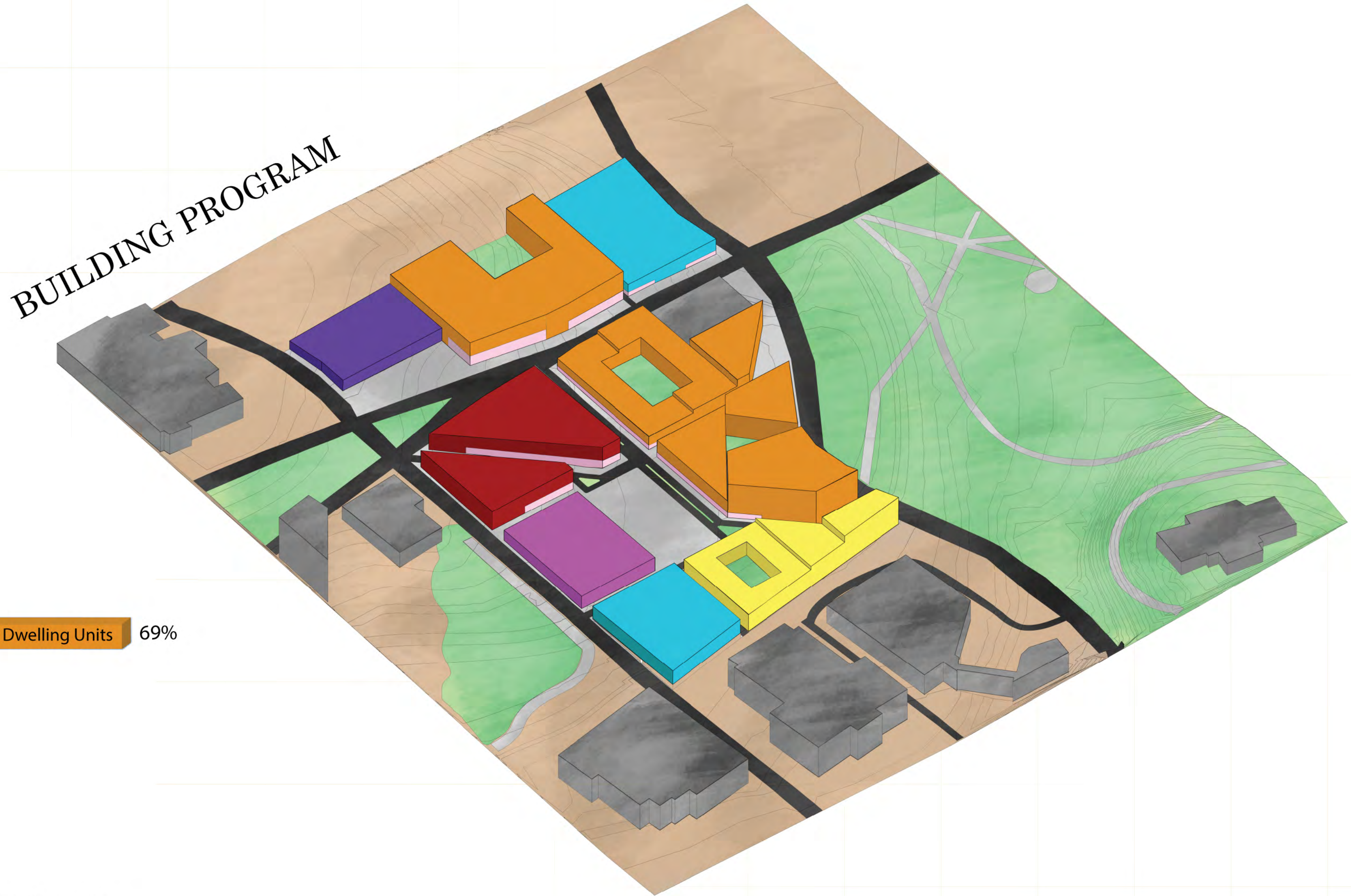
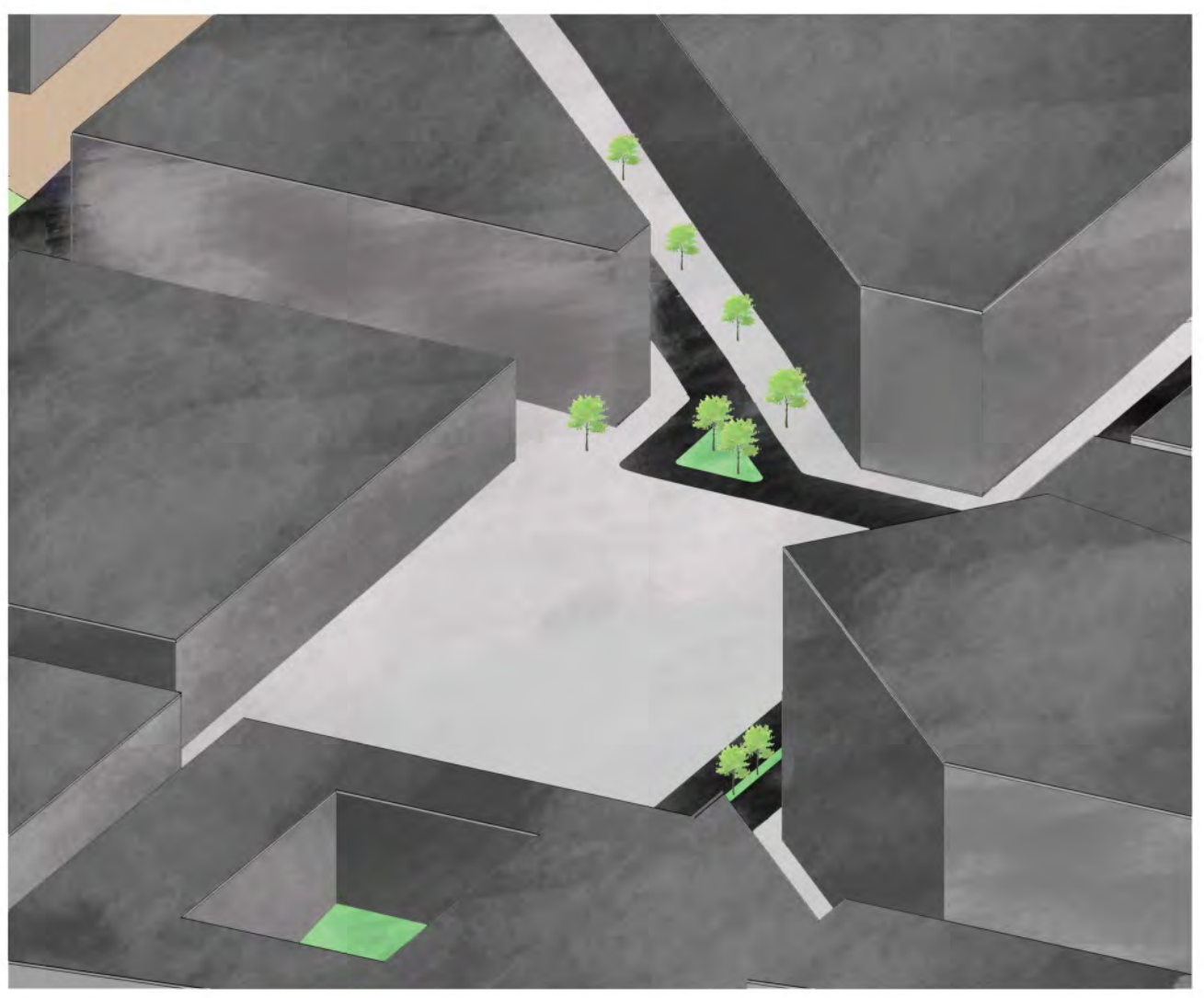
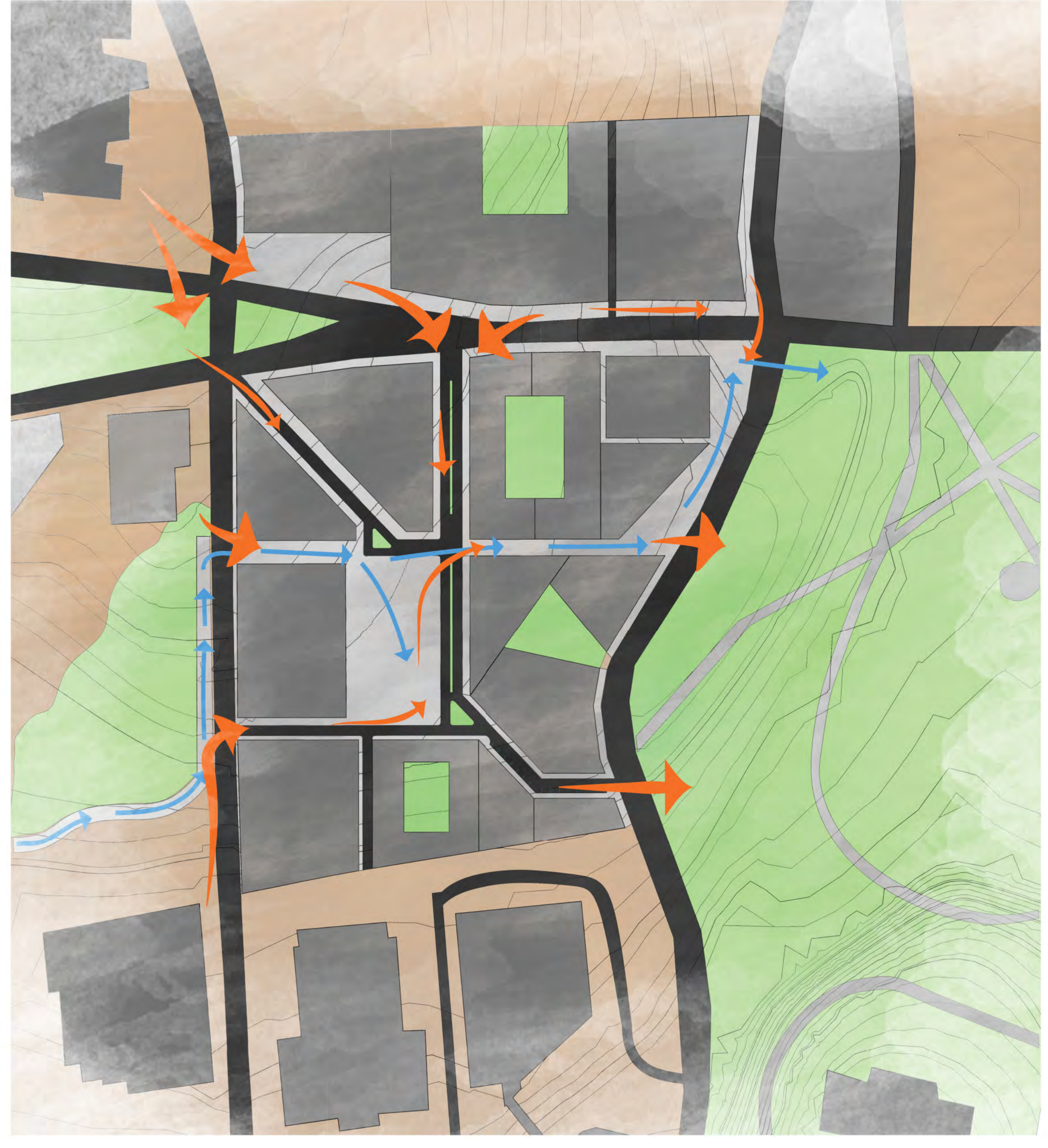
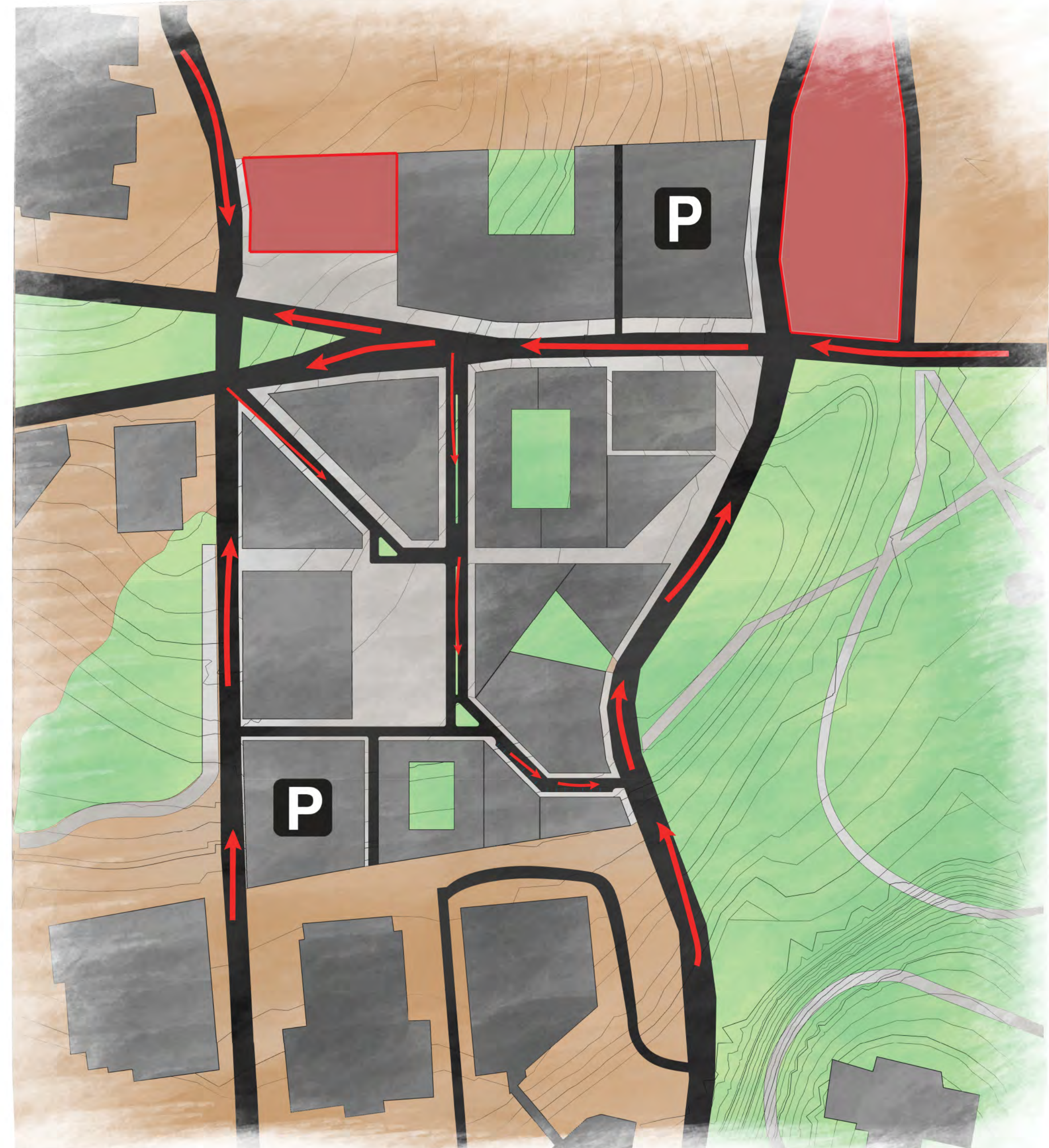
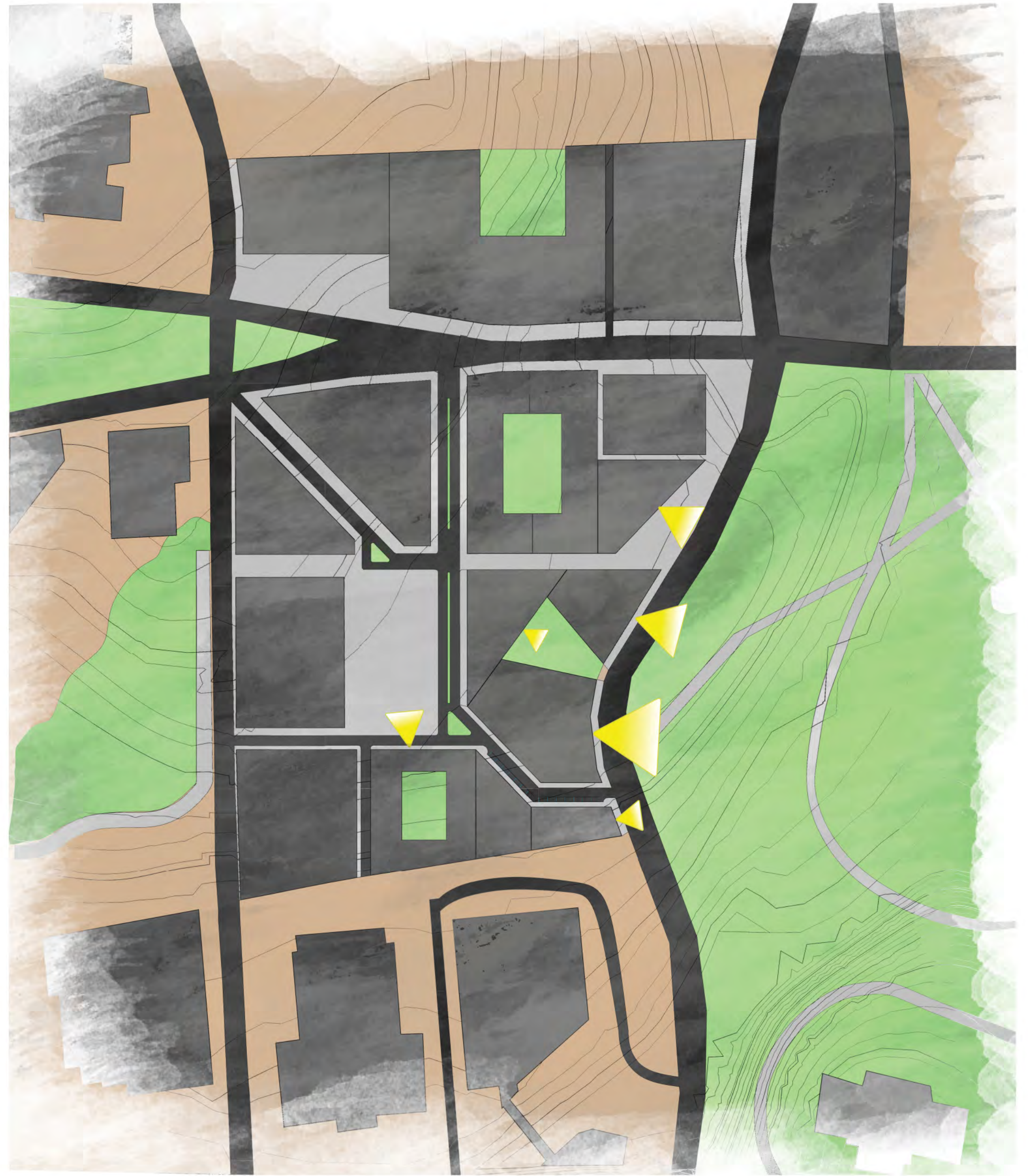
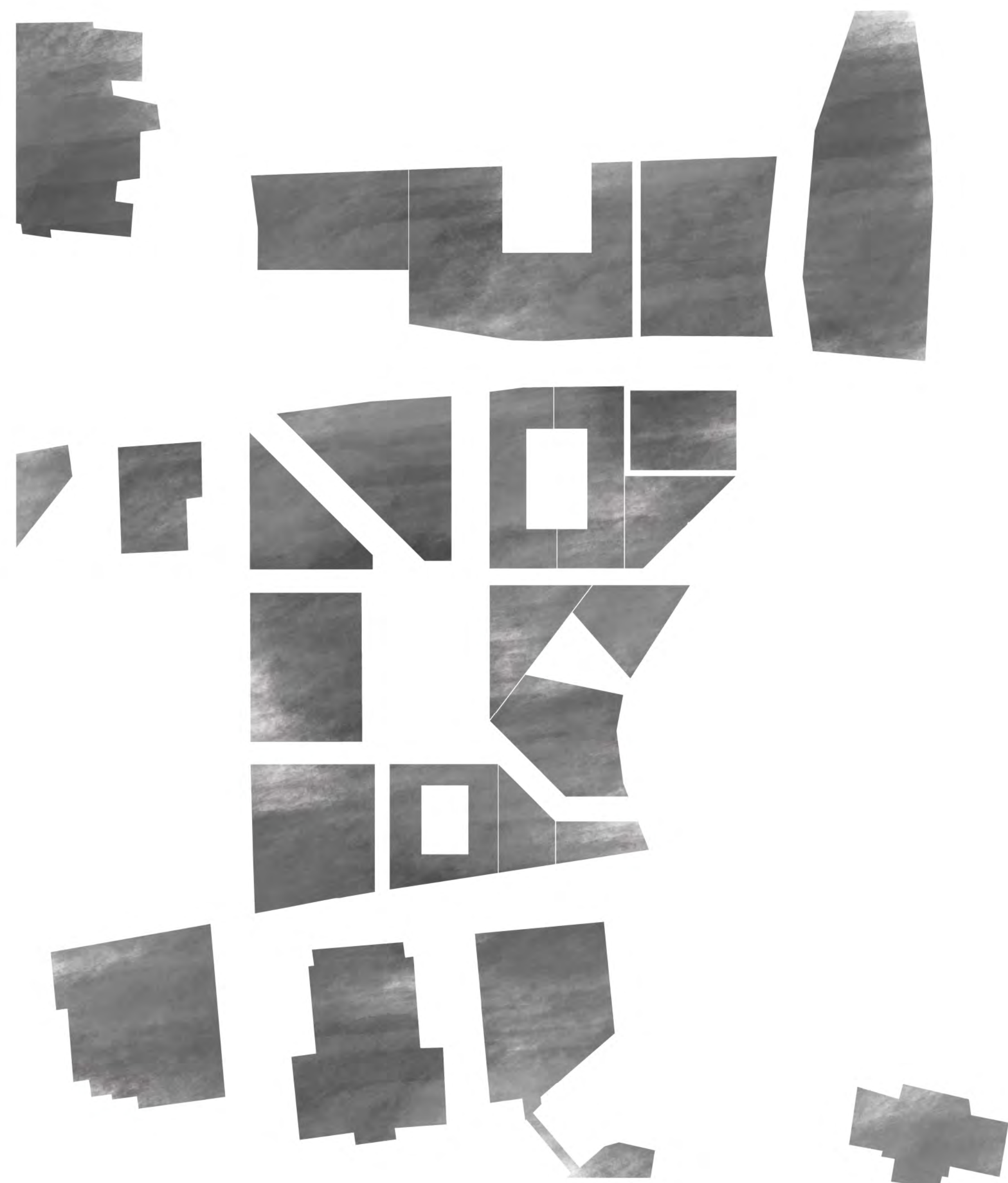


The Bushnell Commons

Kyle Crozier and Katelyn Royce
 AET 352
 Professor Holmes
 Fall 2017



Our Transit Oriented Design neighborhood aims to create a safer, more communal area of Hartford, CT to encourage urban sprawl and growth. With wide pedestrian, as well as vehicular paths and access, people are gathered toward the open center plaza from the existing buildings and roadways surrounding. The complete streets include bike lanes, streetlights, and street trees, with the majority of the retail spaces lining major sidewalks to enliven the areas further. Placing the taller residential structures on the eastern edge of the site utilizes the views into Bushnell Park and adds value to the apartments, as well as strengthens the housing diversity of the neighborhood.



SOLID V. VOID

VIEWS

VEHICULAR CIRCULATION AND TRANSIT

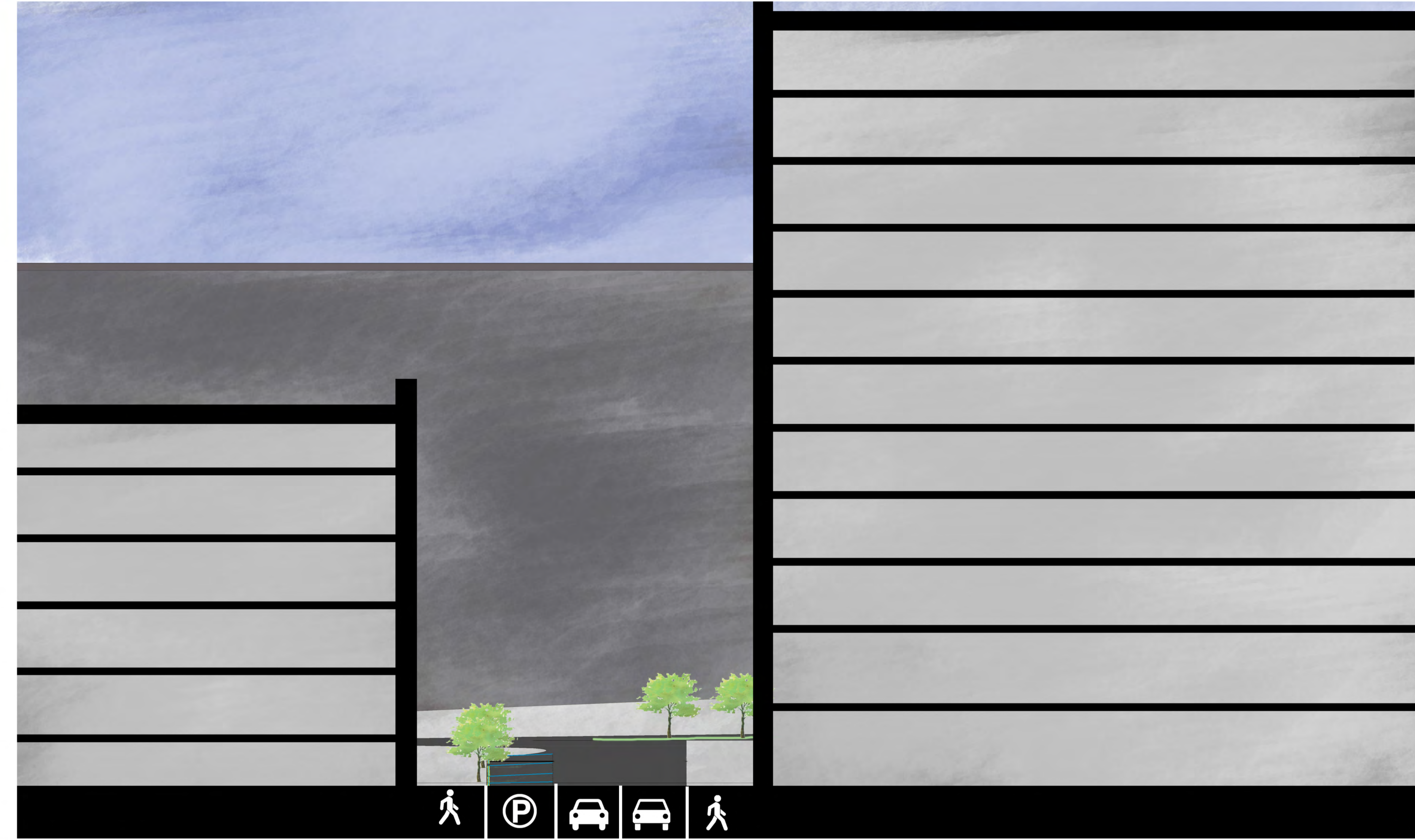
PEDESTRIAN AND BIKE CIRCULATION

Orange :Pedestrian
 Blue: Bike



SITE PLAN

SCALE: 1" = 100'

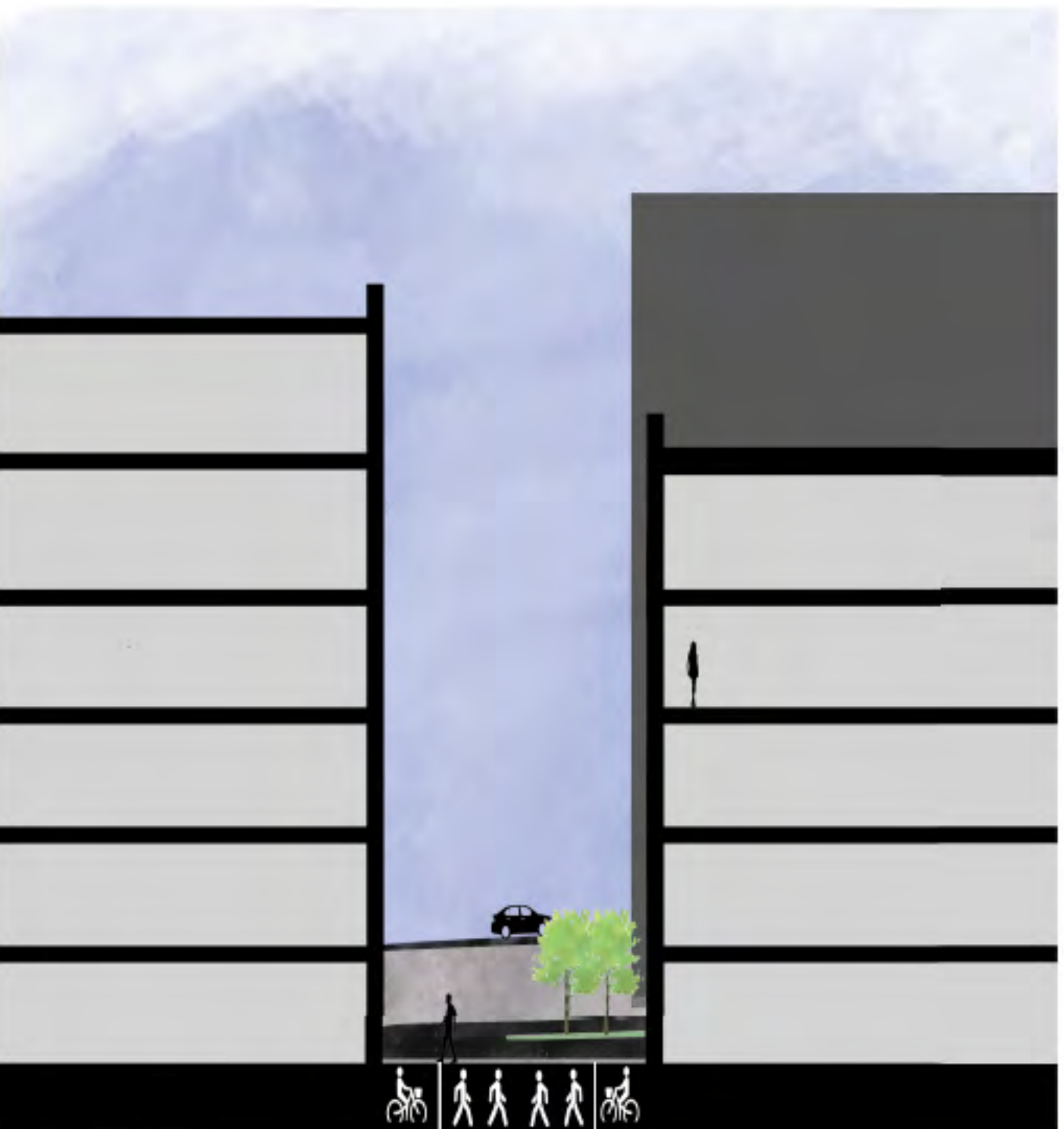


SECTION G-H

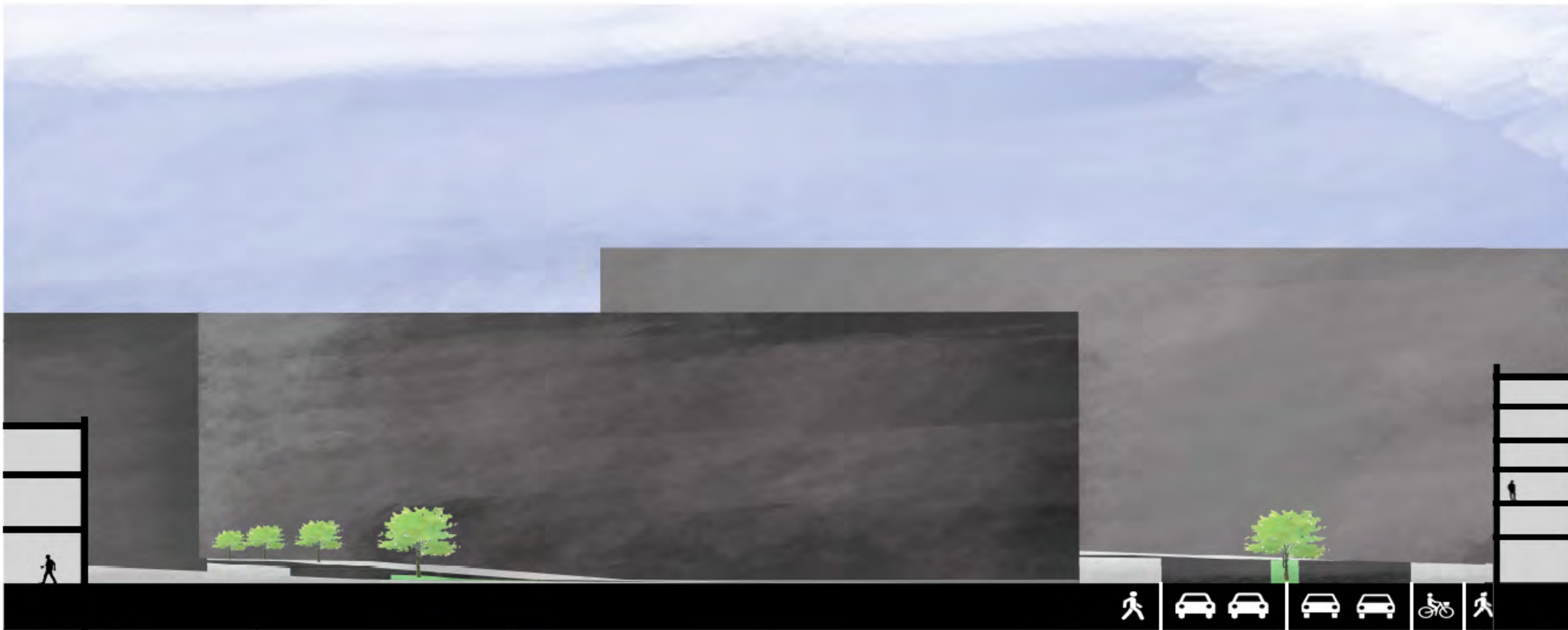


SECTION A-B

SCALE: 1/8" = 1'



SECTION C-D



SECTION E-F

SCALE: 1/8" = 1'



STREET ELEVATION

SCALE: 1/12" = 1'