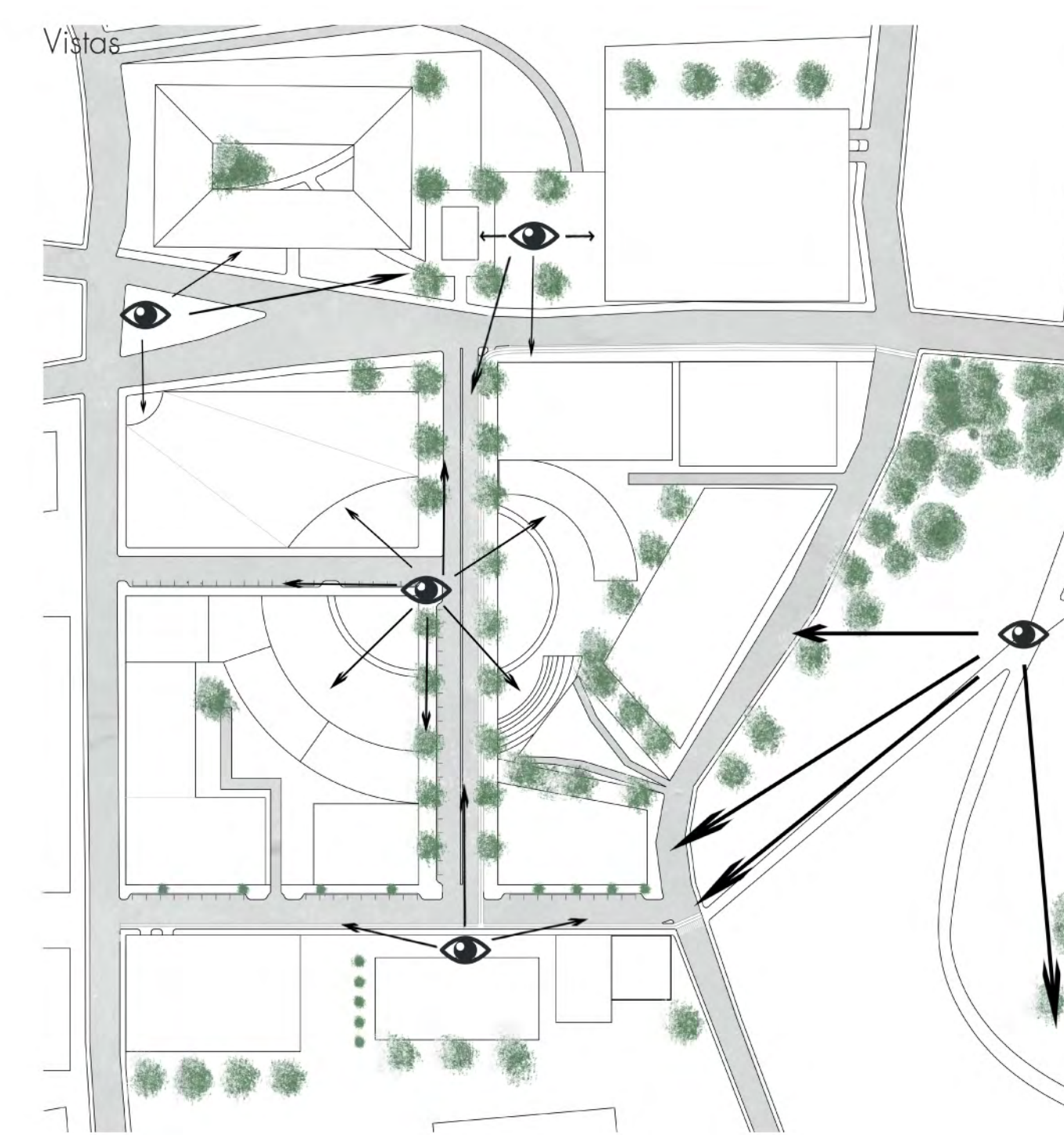
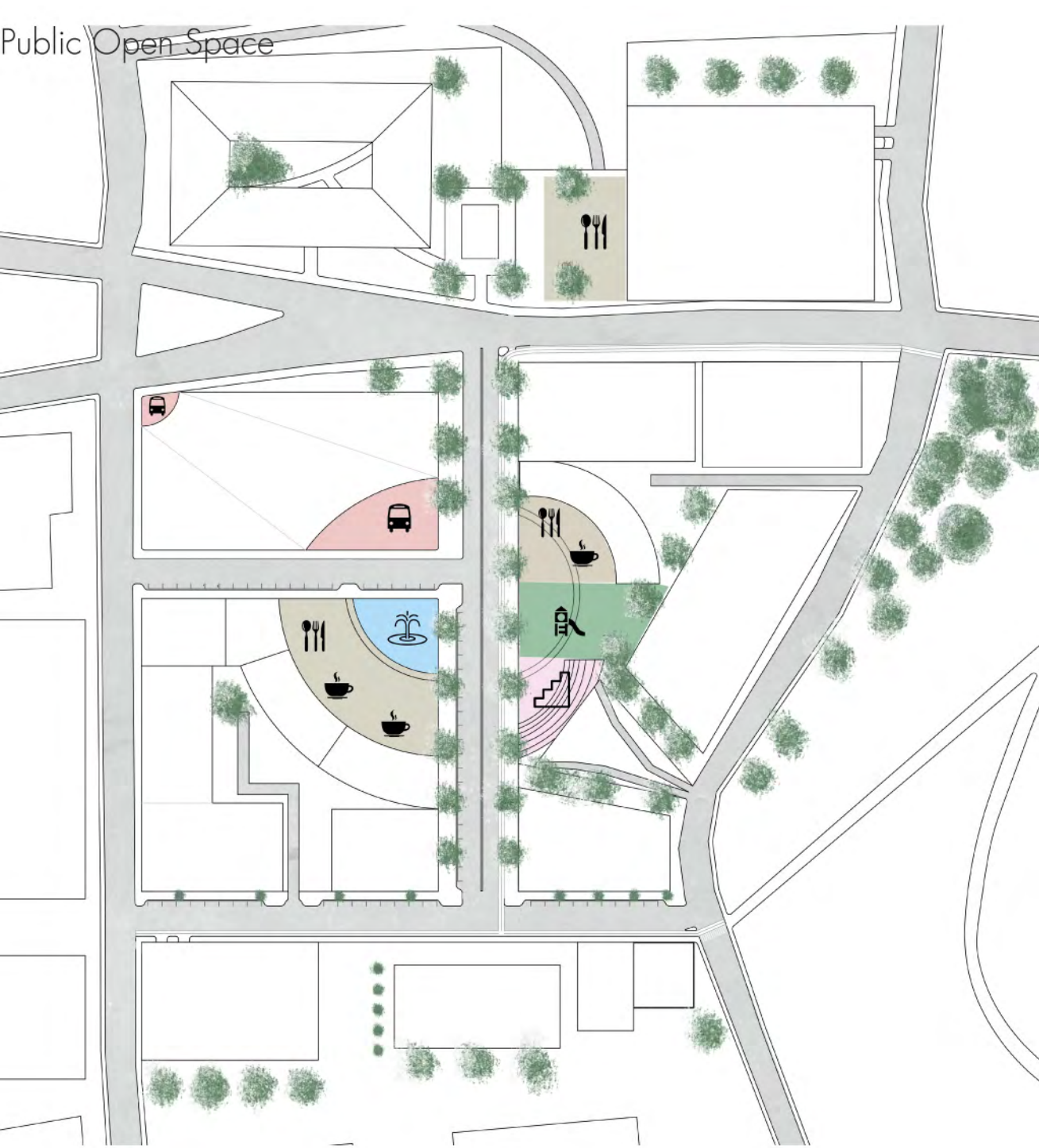


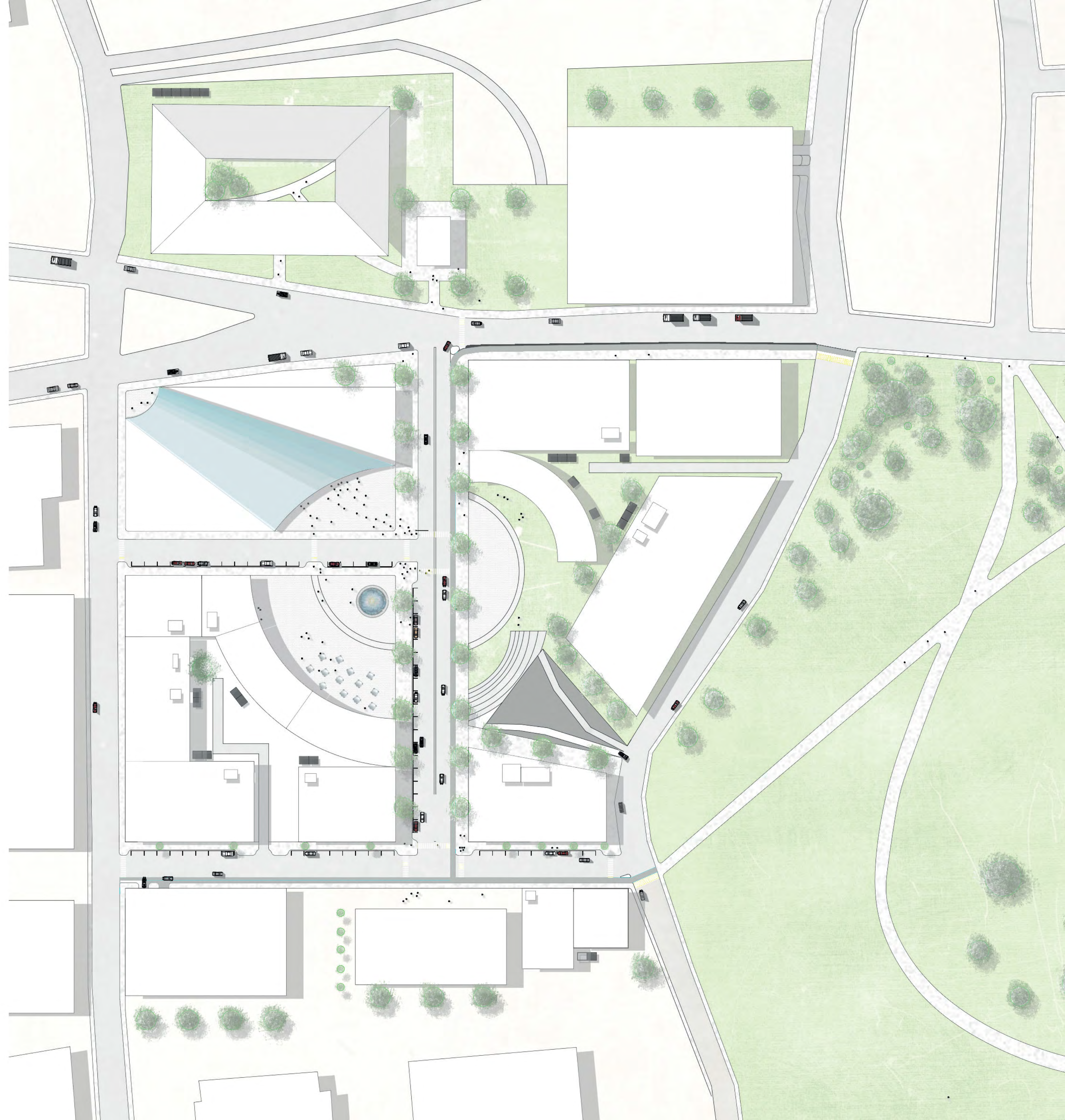
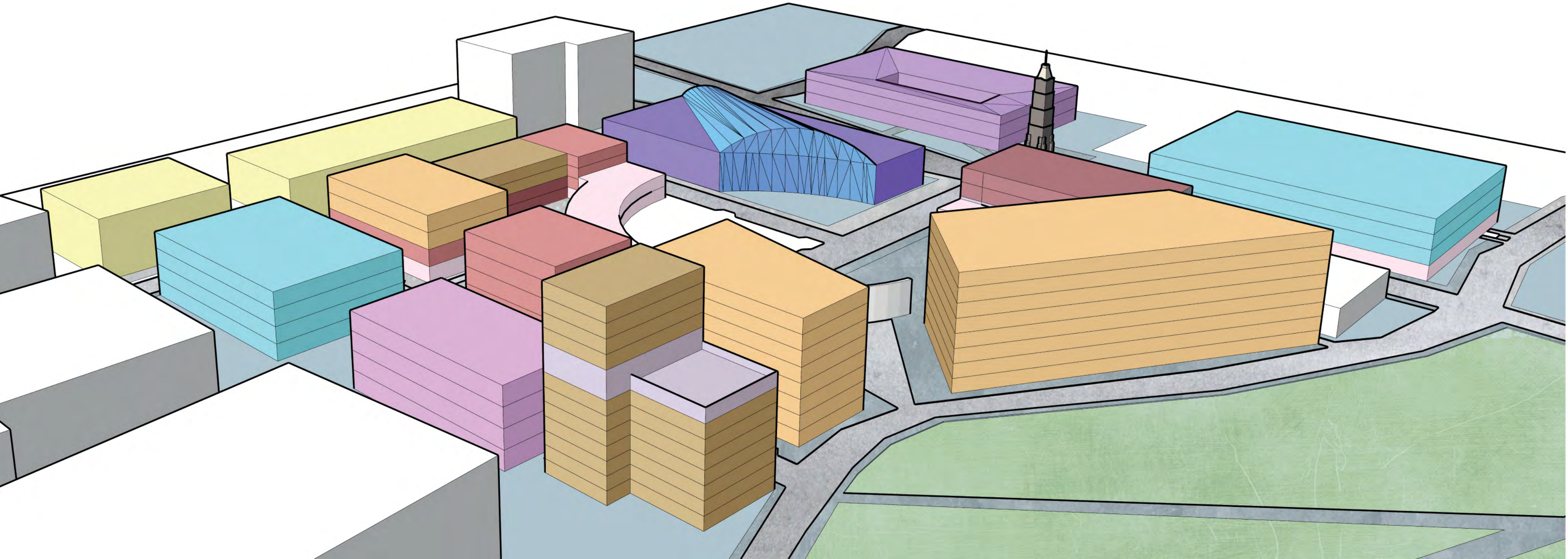
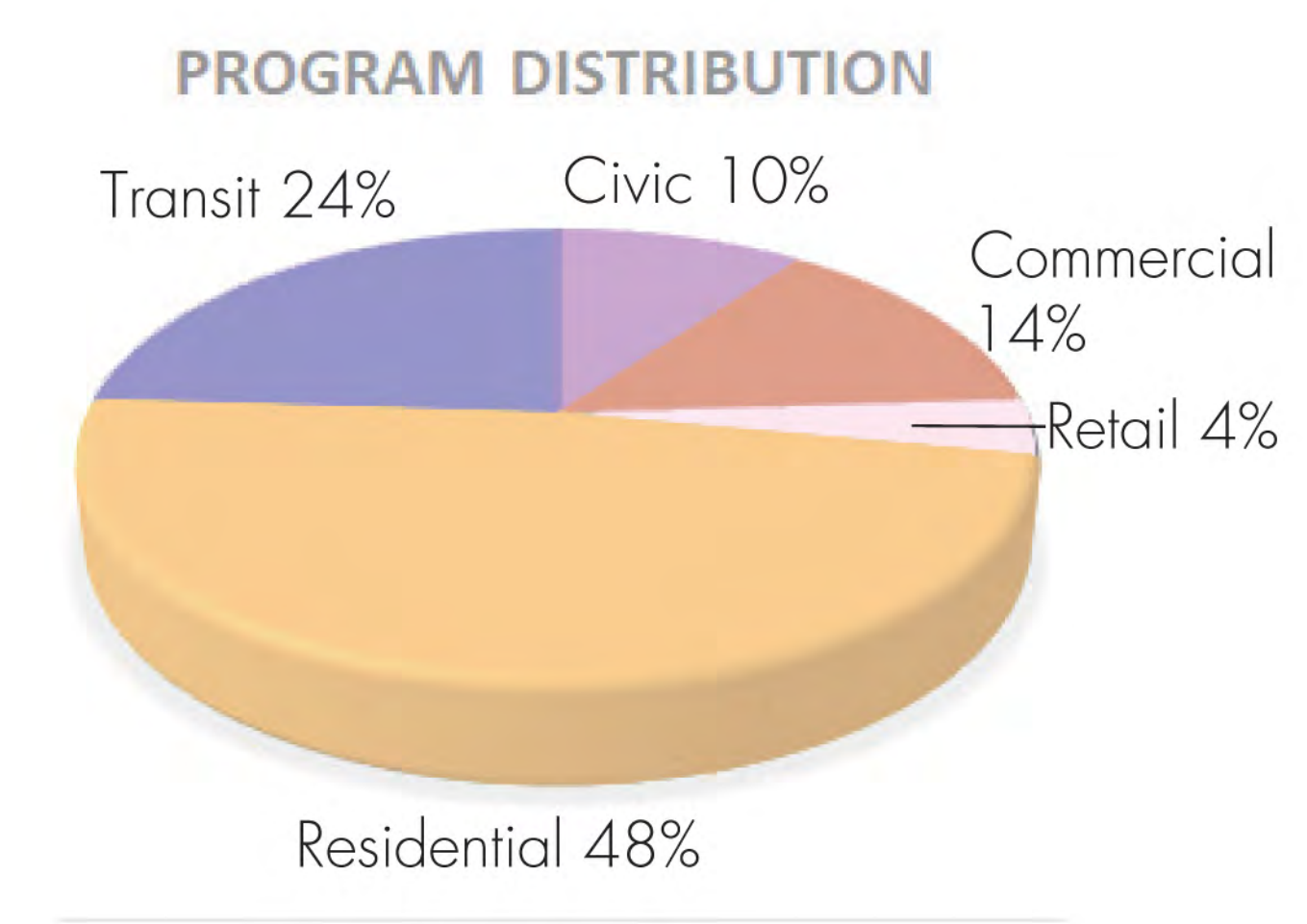
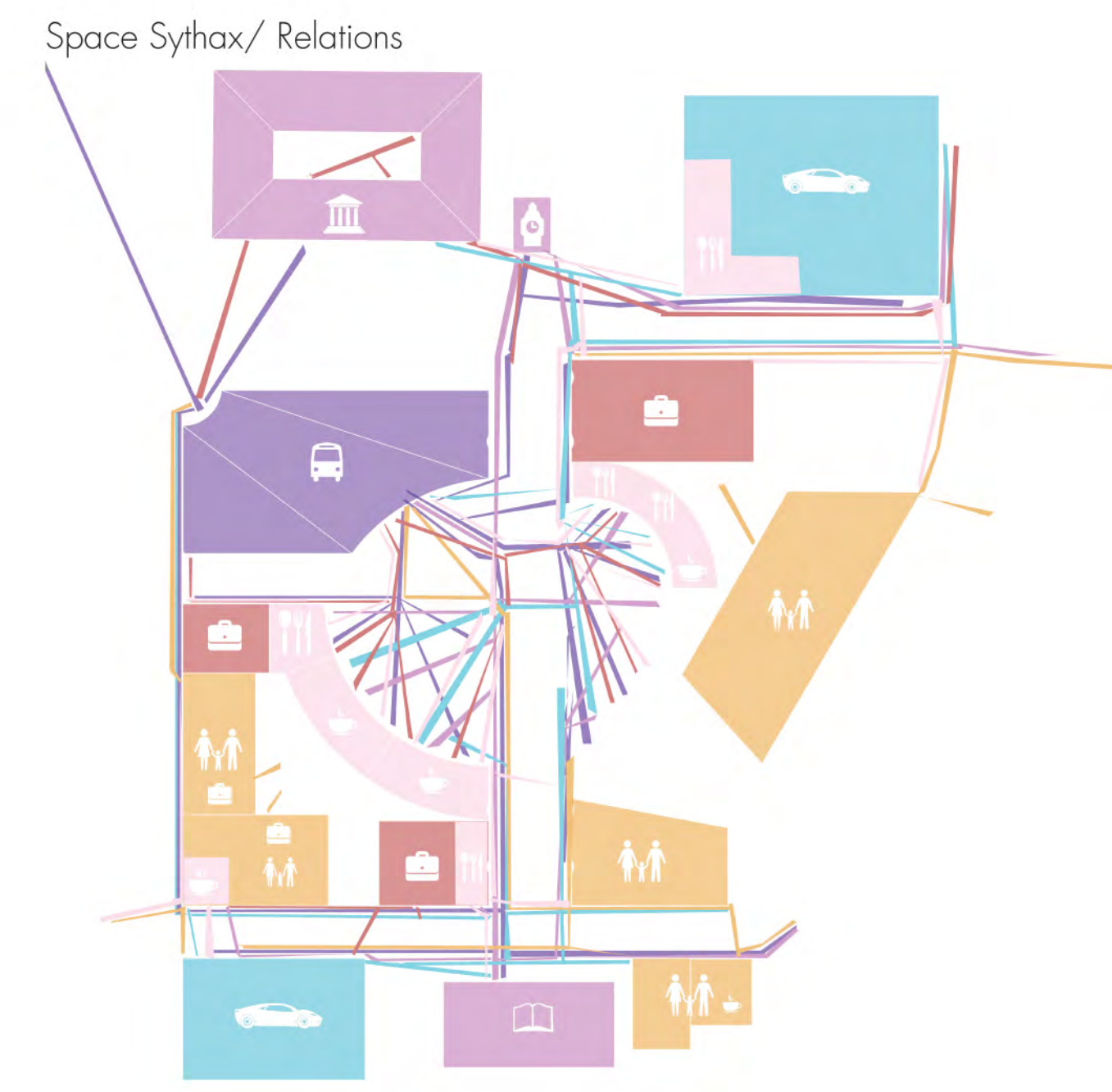
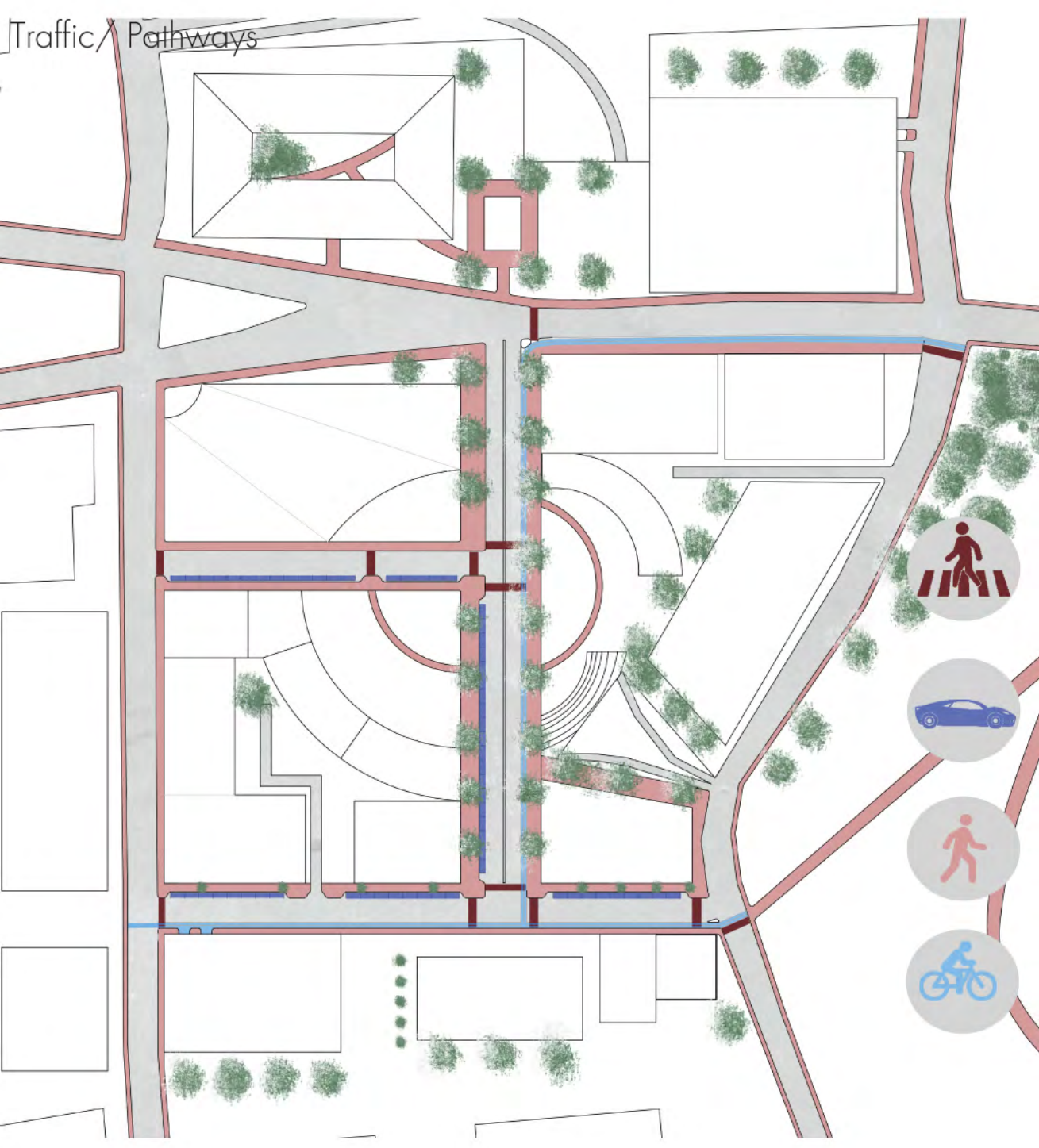
# Project 1.5 - Bushnell Plaza

AET 325-SIT Architectural Design IV  
 Professor Holmes  
 Turner John, Bamberg Ariane



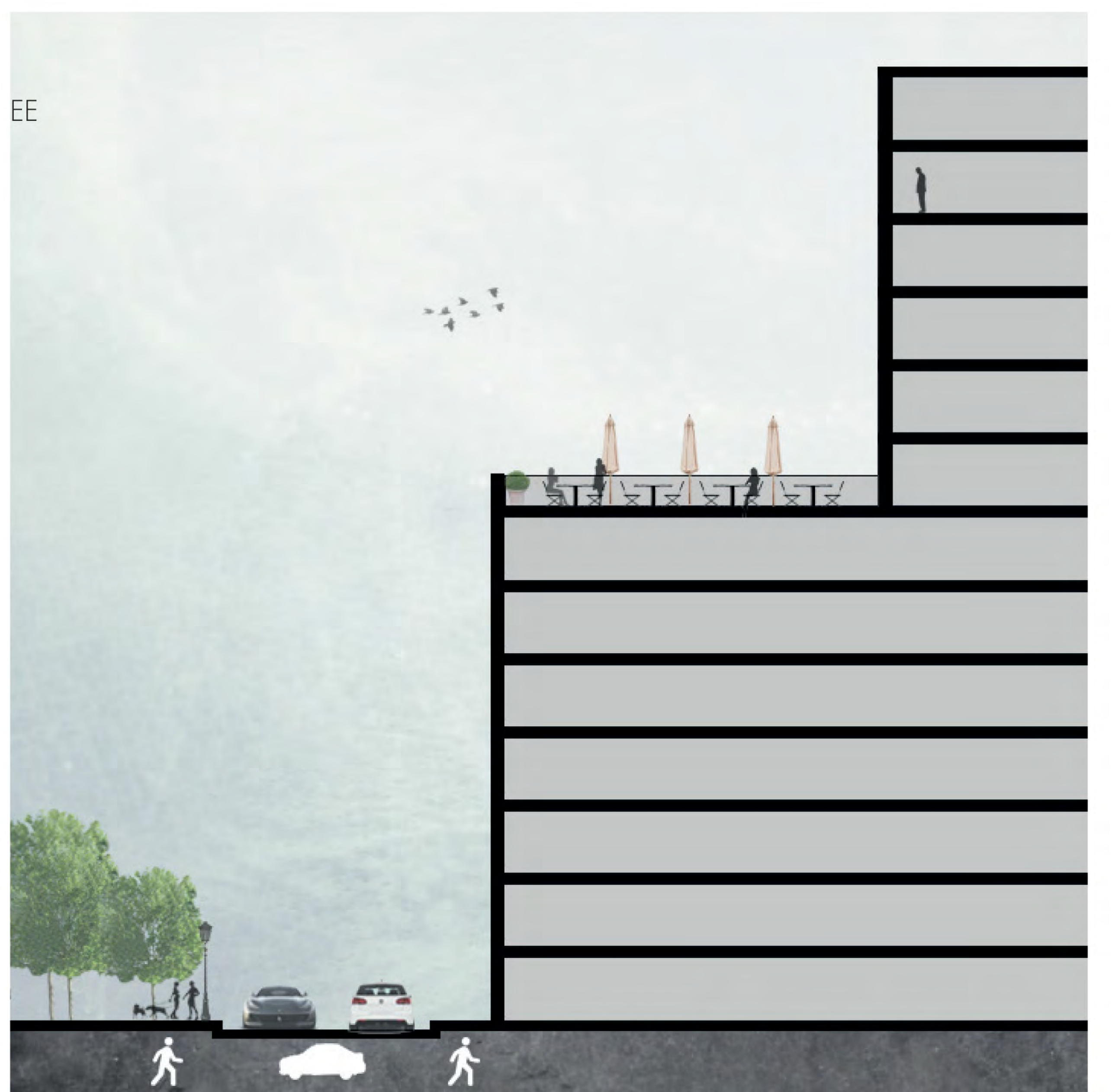
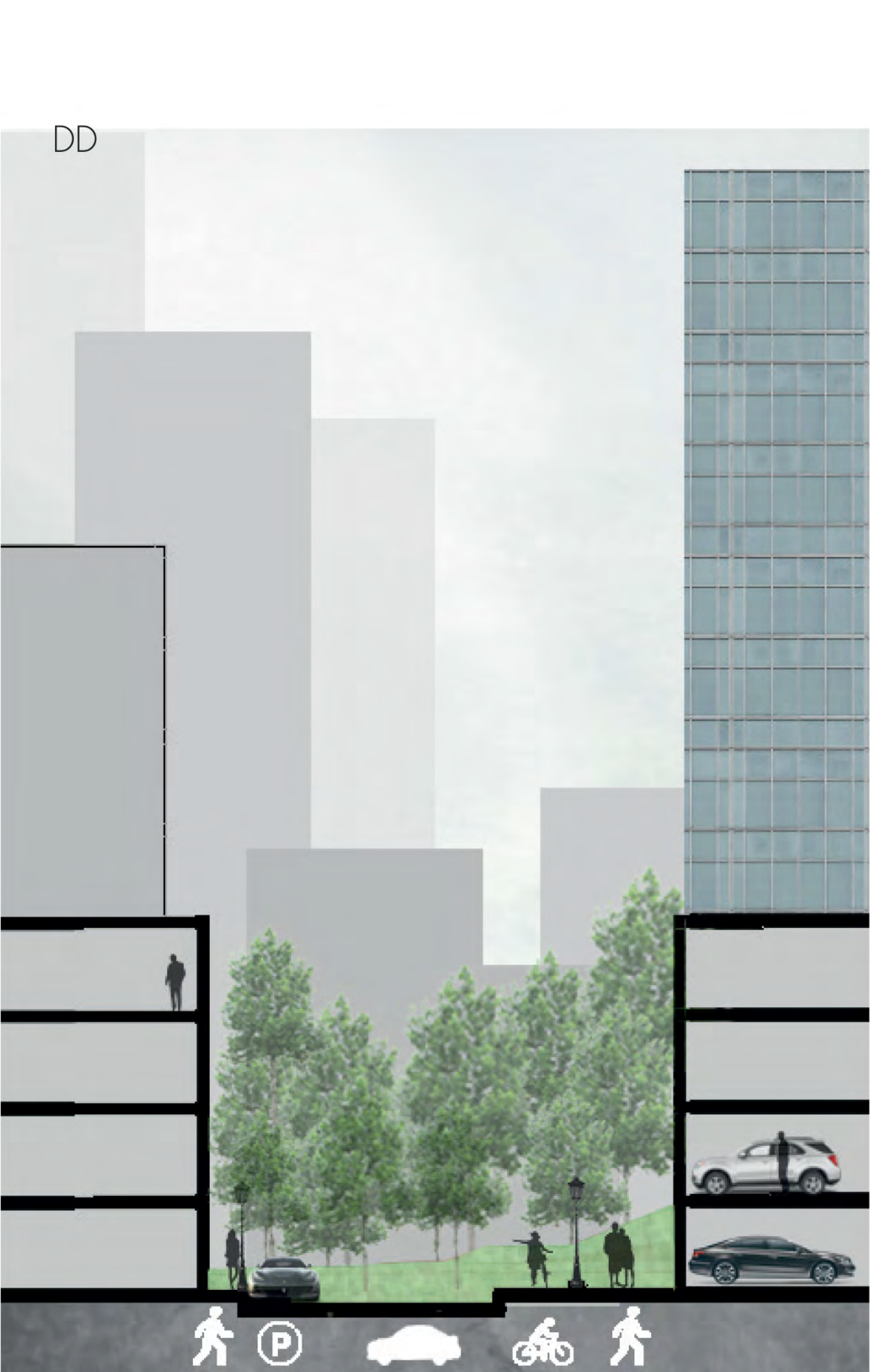
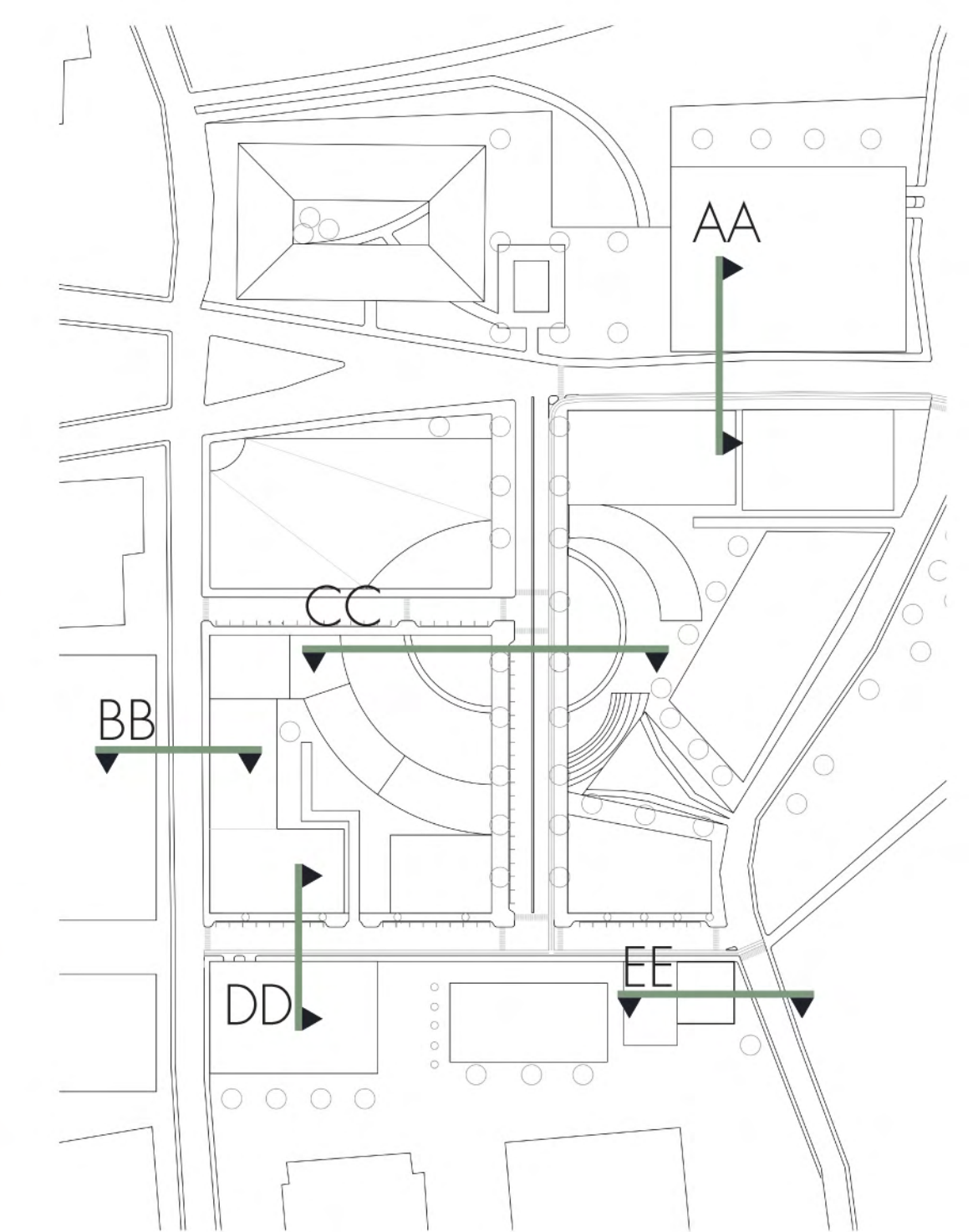
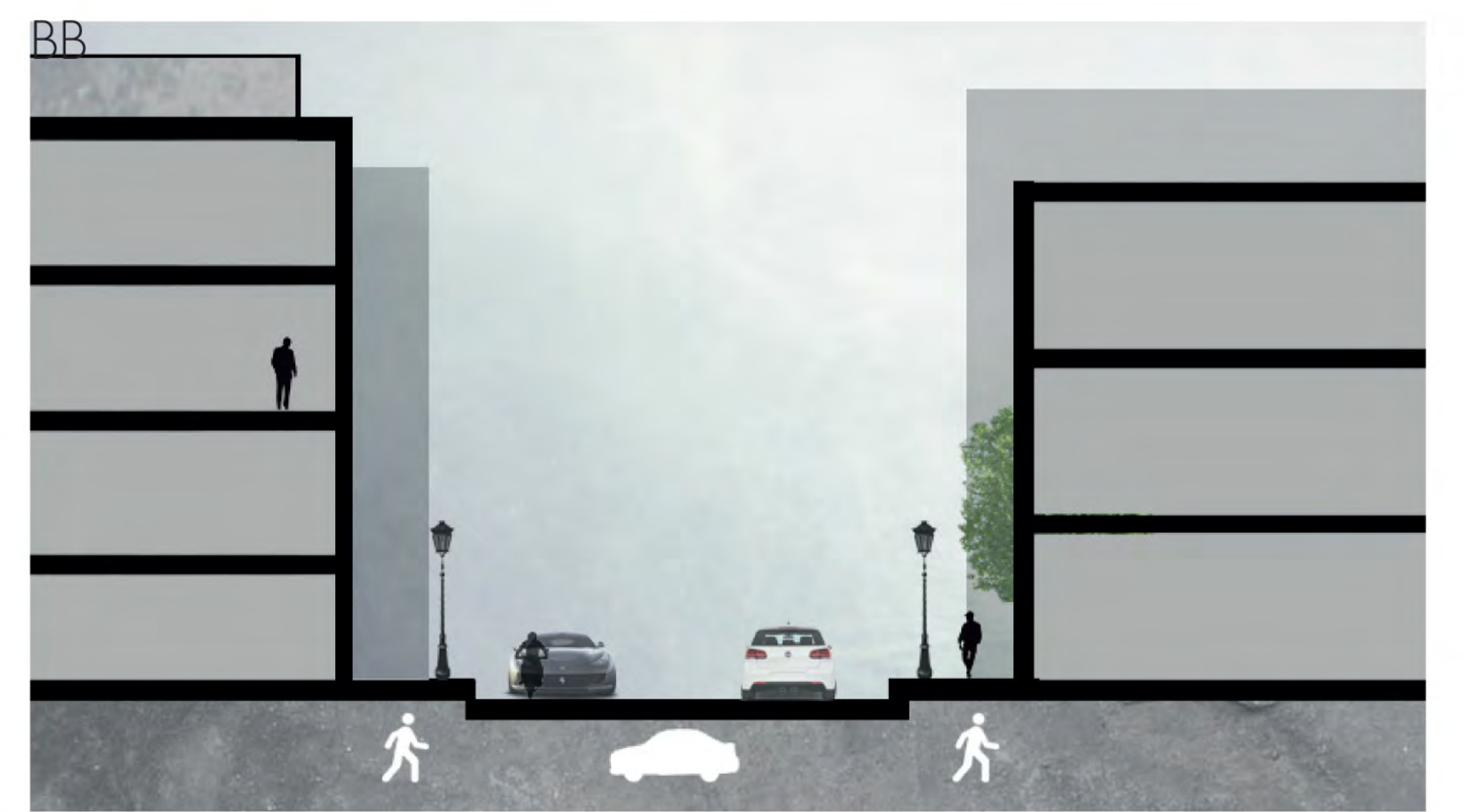
**Concept Narrative**

For Bushnell Plaza, our concept was to funnel people through a transit station into an open, green plaza of retail spaces. This circular designed area is to have people wander around in a wide open space while enjoying the views and have a pleasant shopping experience. A featured element in the plaza is an amphitheater style uncovered seating area. It serves two main purposes, a hangout spot as well as a shield from the cars on highway off ramp. In order to get traffic into the site it was decided to make the transit station act as a funnel into this space. Besides the transit station, other ways to get people to explore the area a bike route was put in place and connected with the existing one. Plus, added street parking and street trees along the wide sidewalks ensure more people will be willing to at least stop by and enjoy the environment. The main retail spaces are the core of the neighborhood and are surrounded by civic, commercial, and residential structures. The plan was to have the majority of residential spaces be facing the park to have a prime view every time a resident looks out there windows. A total of nearly 150 apartments were created, one hundred one thousand square foot dwellings and forty two thousand square foot dwellings. To keep the idea of primary views, vistas were created at the end of the main street acting as "caps" These structures are a library on the south end and a clock tower on the north end. The main commercial buildings and offices are to fill in the vacant areas that were left out from the transit building and everything else.





Street Sections



Street Facade Elevation

