

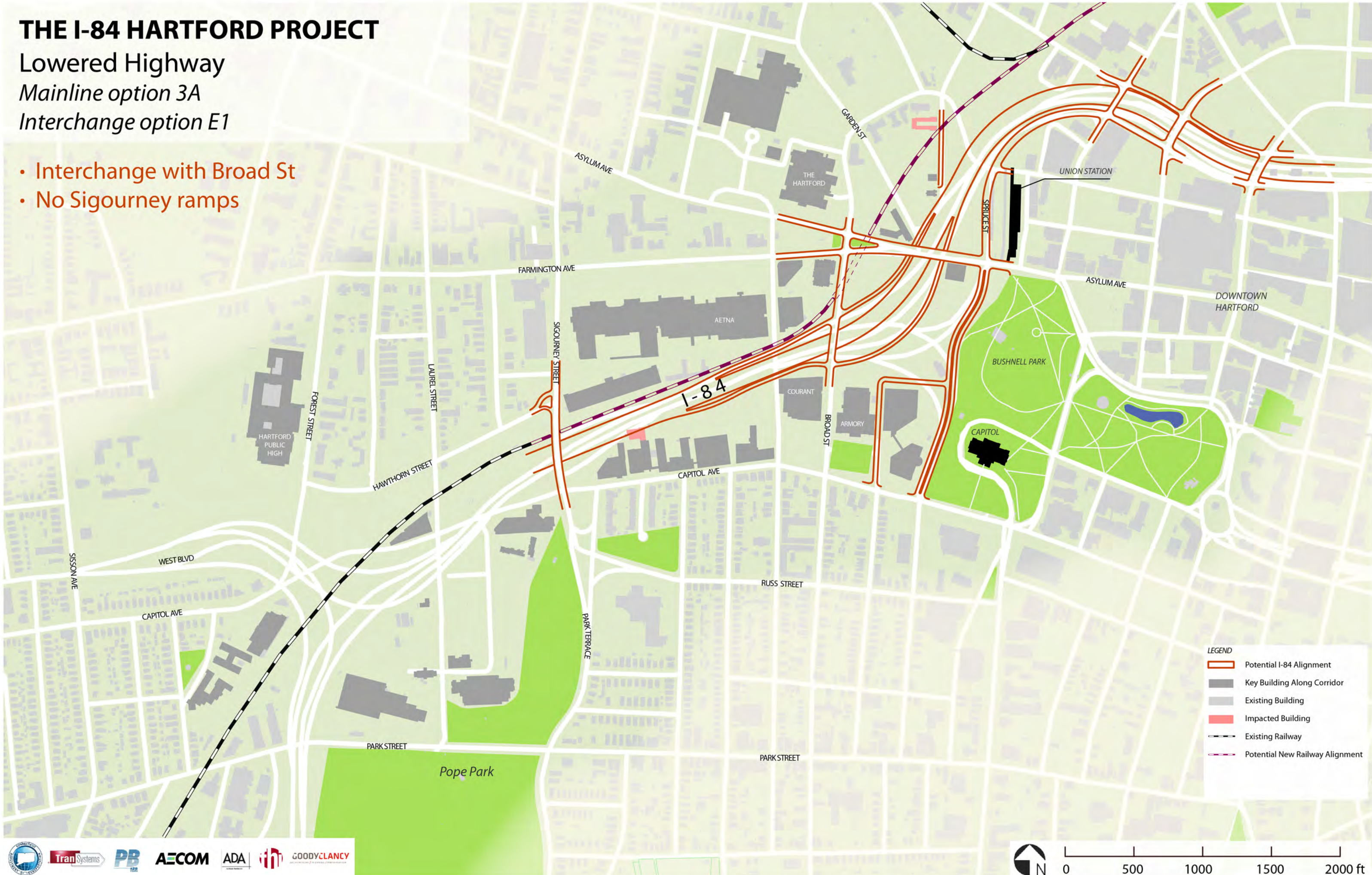
# THE I-84 HARTFORD PROJECT

Lowered Highway

Mainline option 3A

Interchange option E1

- Interchange with Broad St
- No Sigourney ramps



**LEGEND**

- Potential I-84 Alignment
- Key Building Along Corridor
- Existing Building
- Impacted Building
- Existing Railway
- Potential New Railway Alignment

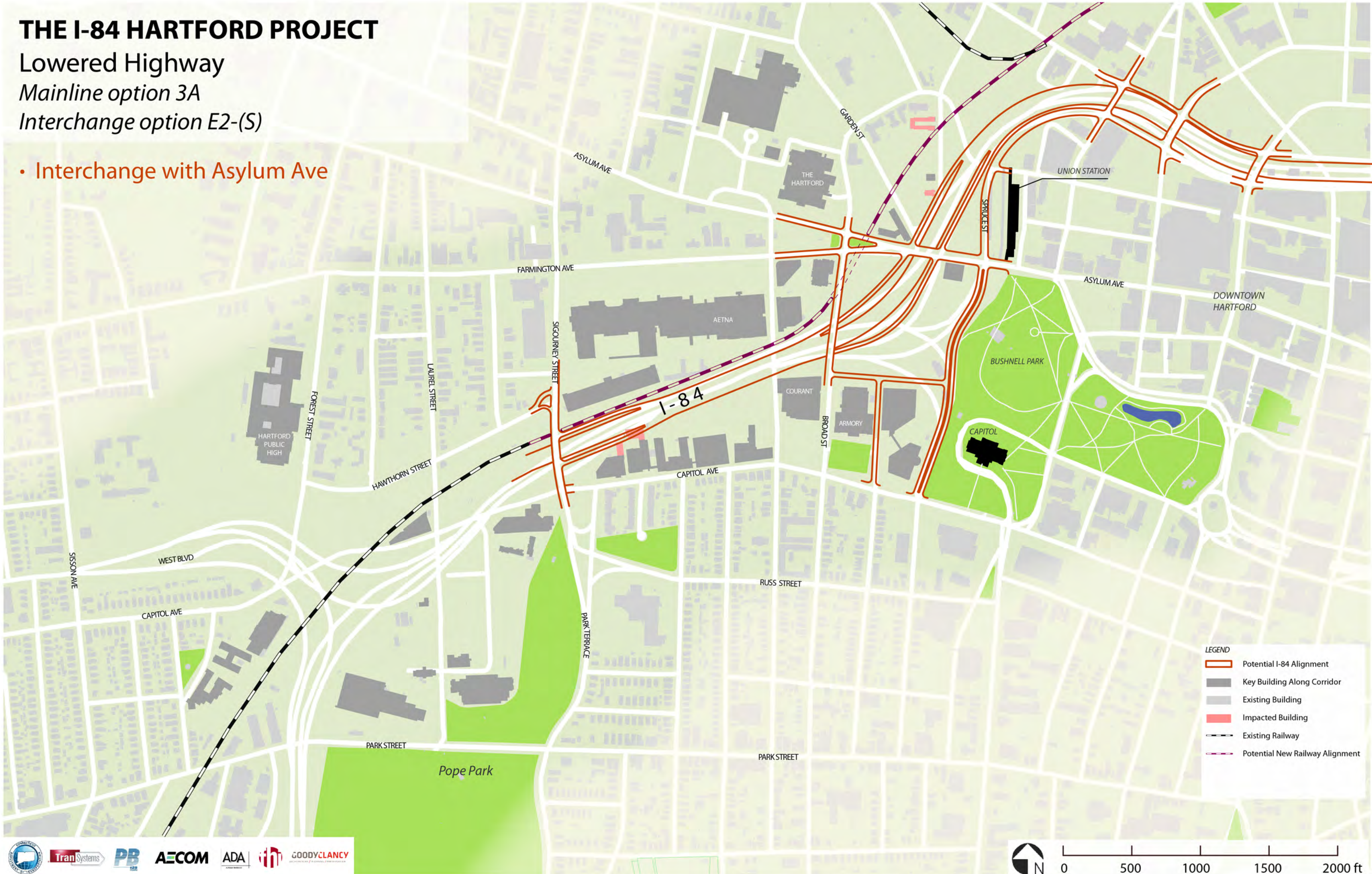
# THE I-84 HARTFORD PROJECT

Lowered Highway

Mainline option 3A

Interchange option E2-(S)

- Interchange with Asylum Ave



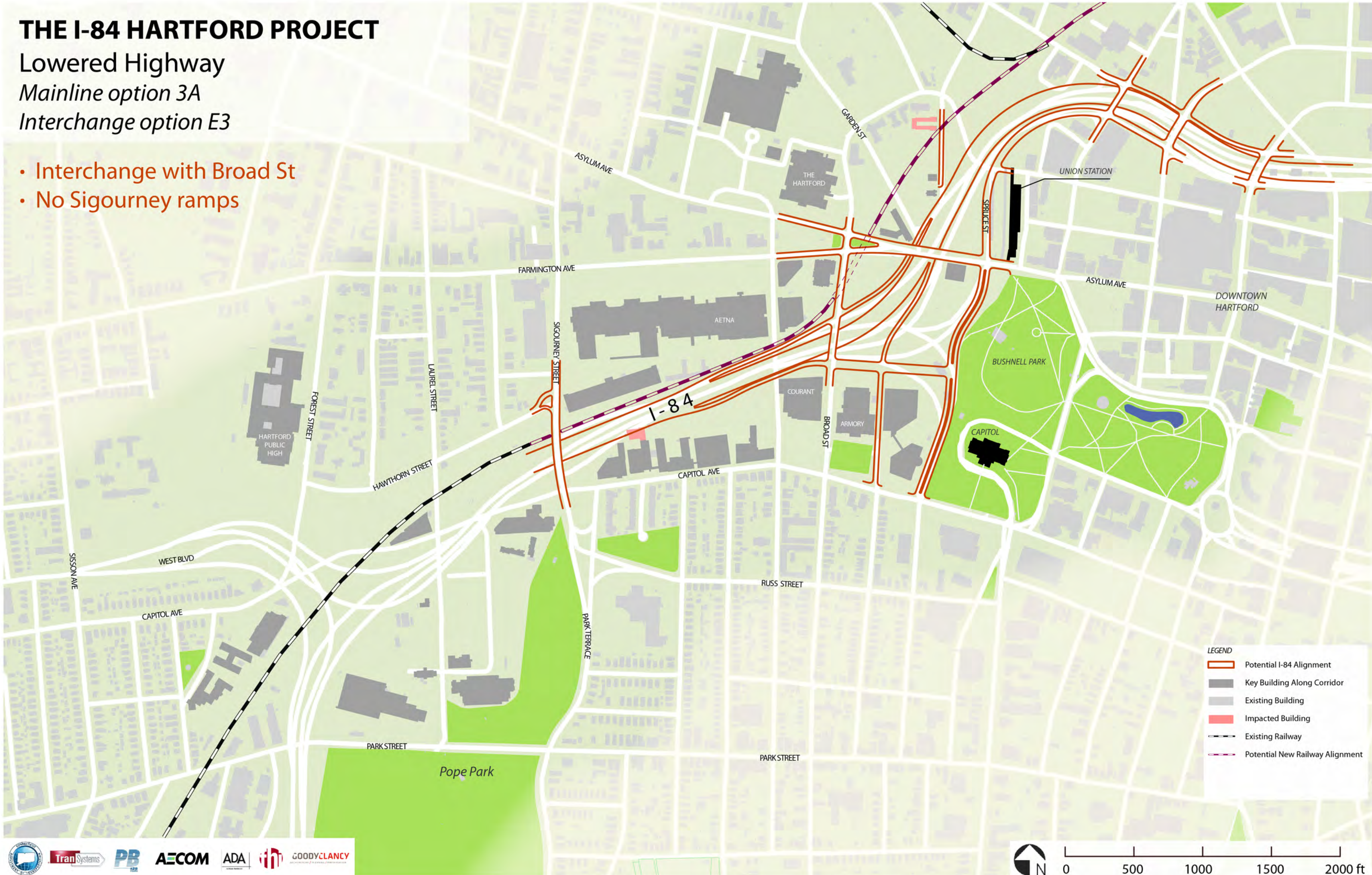
# THE I-84 HARTFORD PROJECT

Lowered Highway

Mainline option 3A

Interchange option E3

- Interchange with Broad St
- No Sigourney ramps



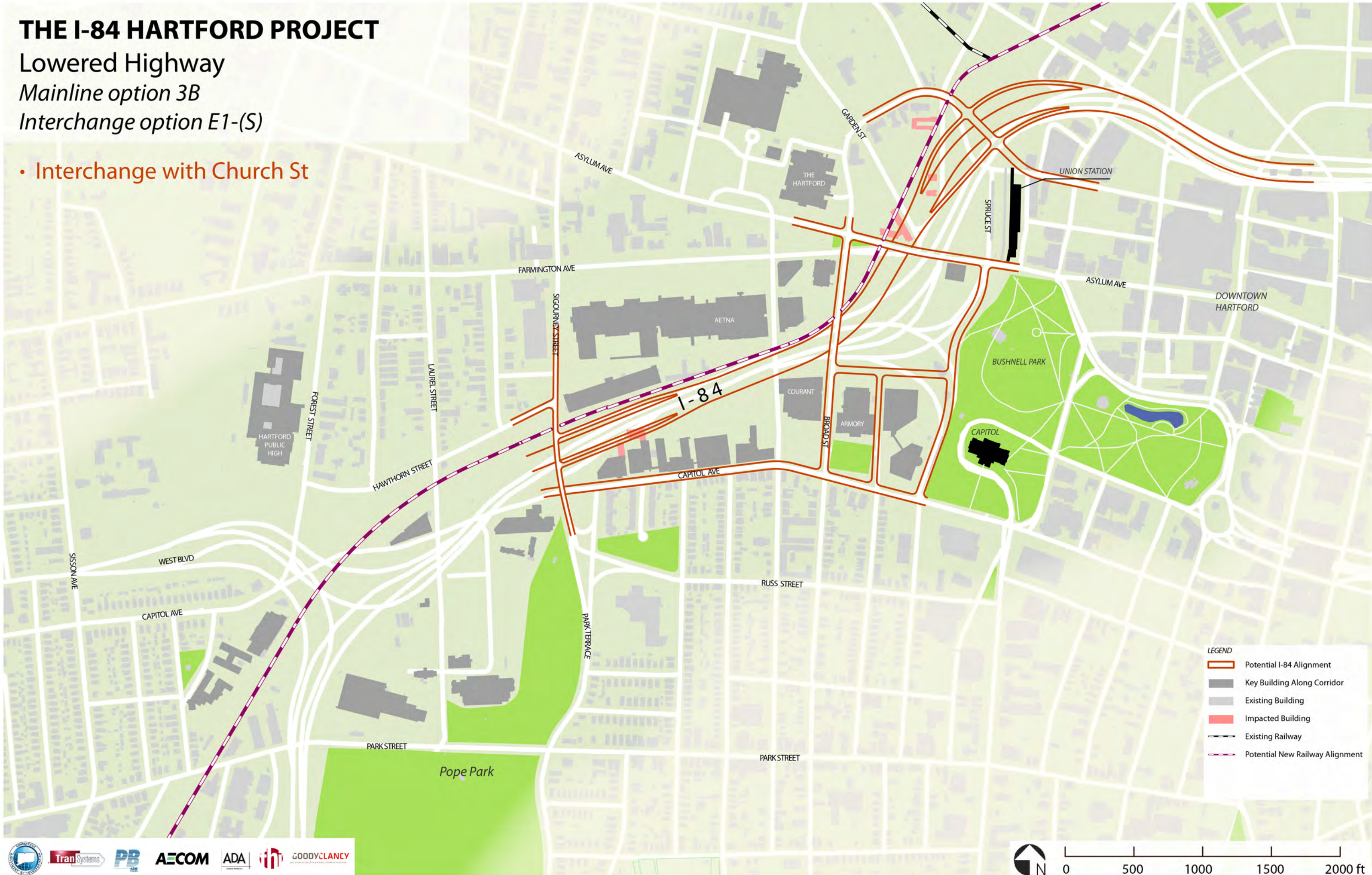
# THE I-84 HARTFORD PROJECT

Lowered Highway

Mainline option 3B

Interchange option E1-(S)

- Interchange with Church St



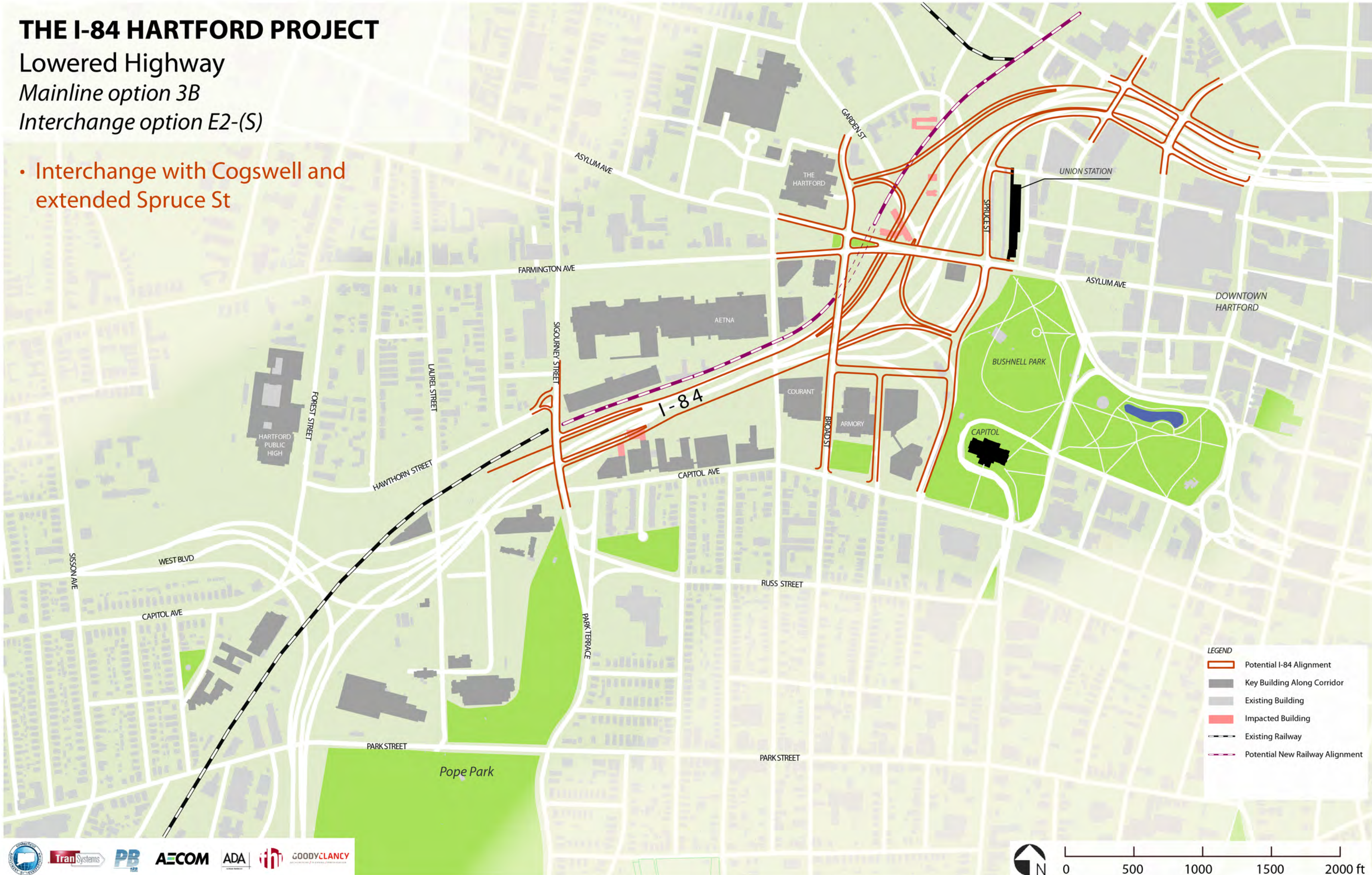
# THE I-84 HARTFORD PROJECT

Lowered Highway

Mainline option 3B

Interchange option E2-(S)

- Interchange with Cogswell and extended Spruce St



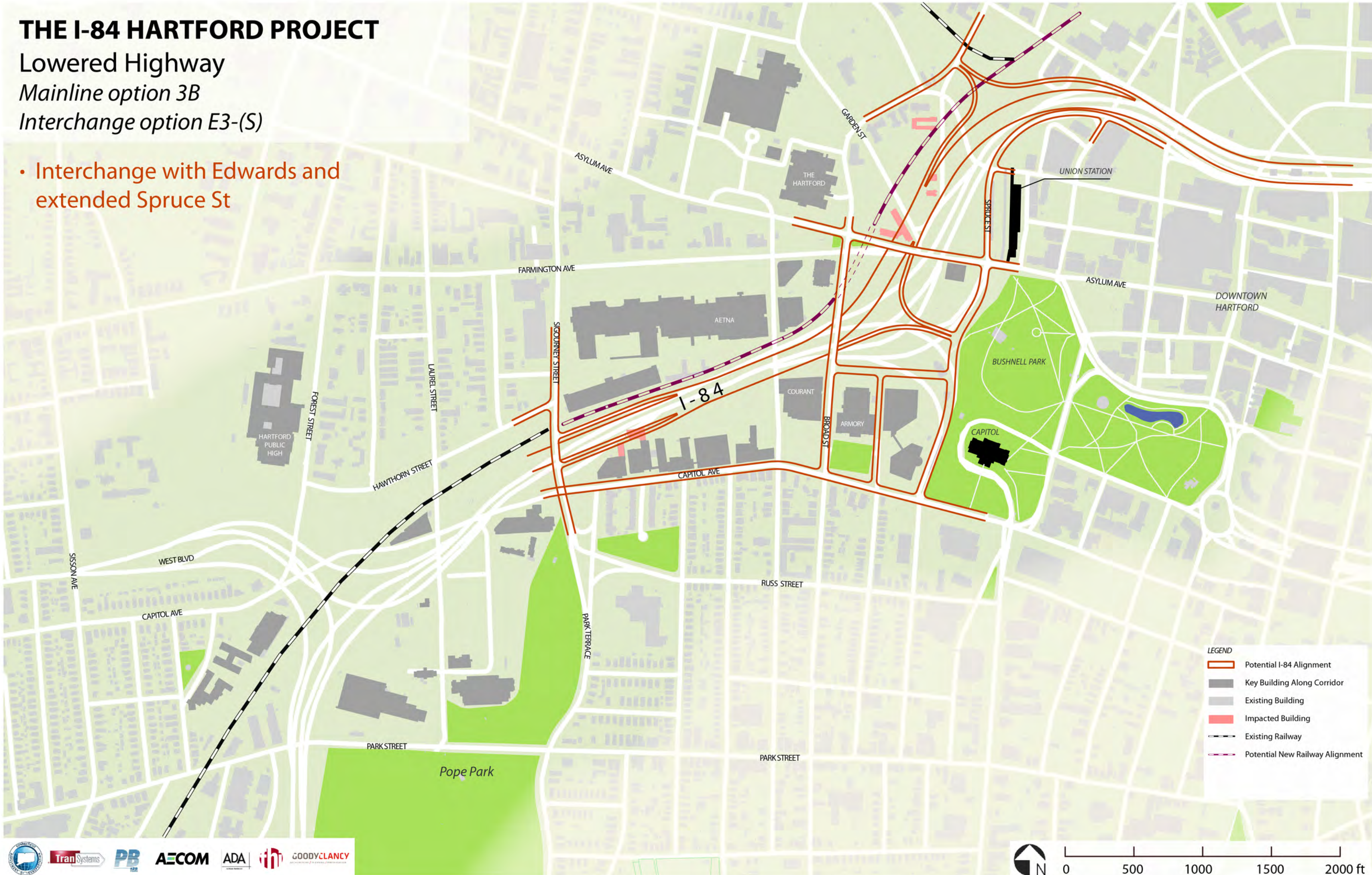
# THE I-84 HARTFORD PROJECT

Lowered Highway

Mainline option 3B

Interchange option E3-(S)

- Interchange with Edwards and extended Spruce St



# THE I-84 HARTFORD PROJECT

Lowered Highway

Mainline option 3B

Interchange option E4-(S)

- Interchange with Cogswell and Spruce St



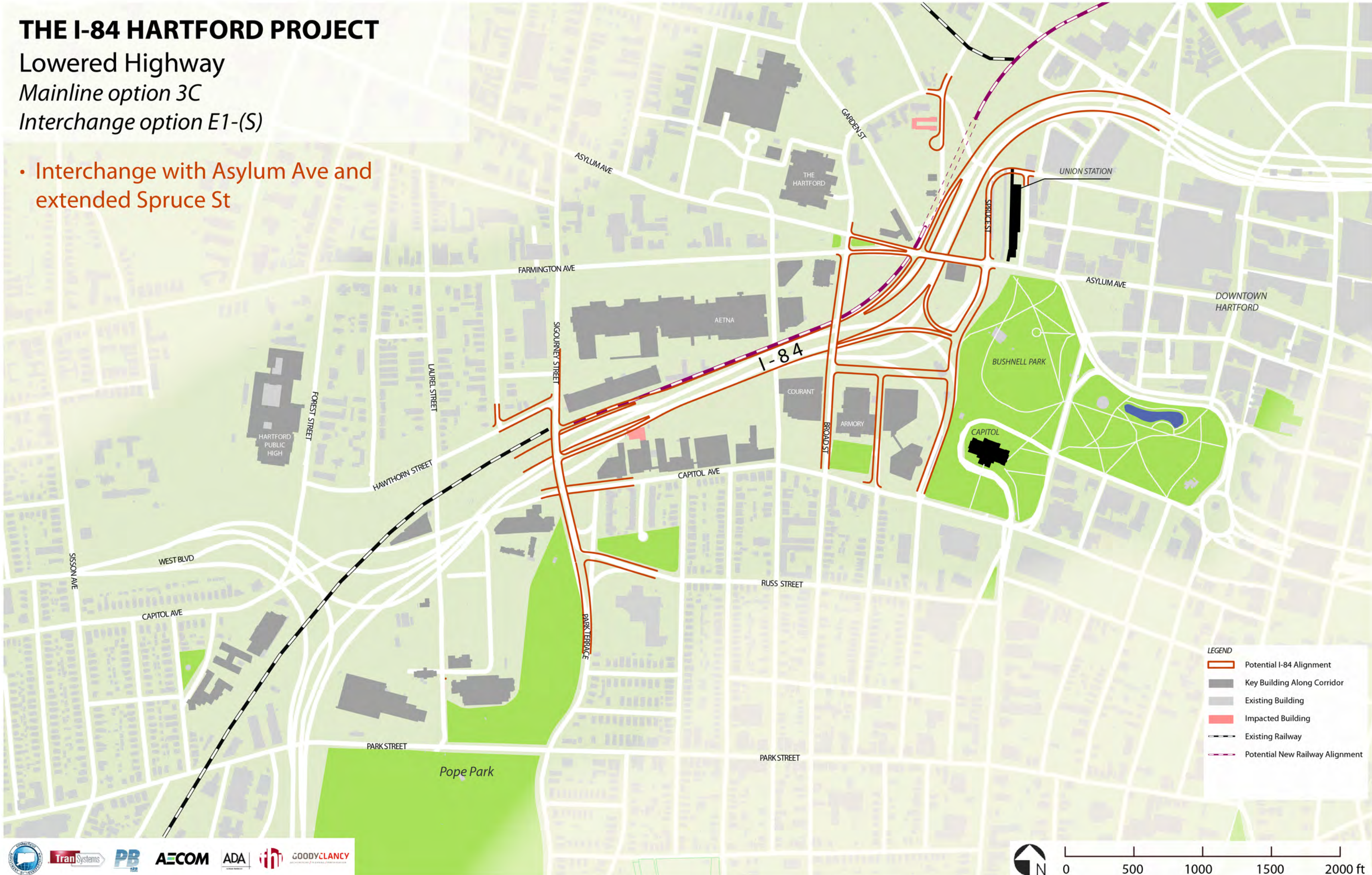
# THE I-84 HARTFORD PROJECT

Lowered Highway

Mainline option 3C

Interchange option E1-(S)

- Interchange with Asylum Ave and extended Spruce St



**LEGEND**

- Potential I-84 Alignment
- Key Building Along Corridor
- Existing Building
- Impacted Building
- Existing Railway
- Potential New Railway Alignment



# THE I-84 HARTFORD PROJECT

Lowered Highway

Mainline option 3C

Interchange option E2

- Interchange with Cogswell and extended Spruce St

