



THE I-84 HARTFORD PROJECT

Bicycle/Pedestrian/Transit Working Group Meeting # 2

December 10, 2014



Agenda

- Scoping Overview
- Preliminary Conceptual Alternatives
- Discussion
 - Connectivity Impacts and Opportunities
 - Bicycle and Pedestrian
 - Transit (e.g. **CT***fastrak*, Union Station)
 - Potential Interchange Locations and Layouts
- Next Steps / Future Meetings



Recap of last meeting



Scoping

- Scoping is the first “official” step in the environmental process
- Purpose of Scoping
 - To convey what the project is all about (Purpose and Need)
 - To seek input on alternatives
 - To seek input on environmental concerns
- Agency Scoping Meeting
- Public Scoping Meeting

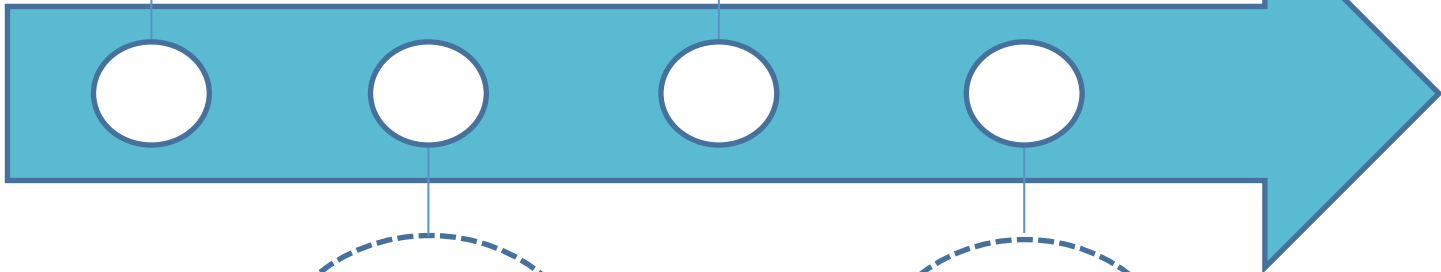


Scoping Process

Scoping Comment Period
December 18, 2014 to February 20, 2015

Scoping
Comment Period
Opens and
Scoping Materials
Available
12/18/14

Scoping
Comment
Period Closes
2/20/15

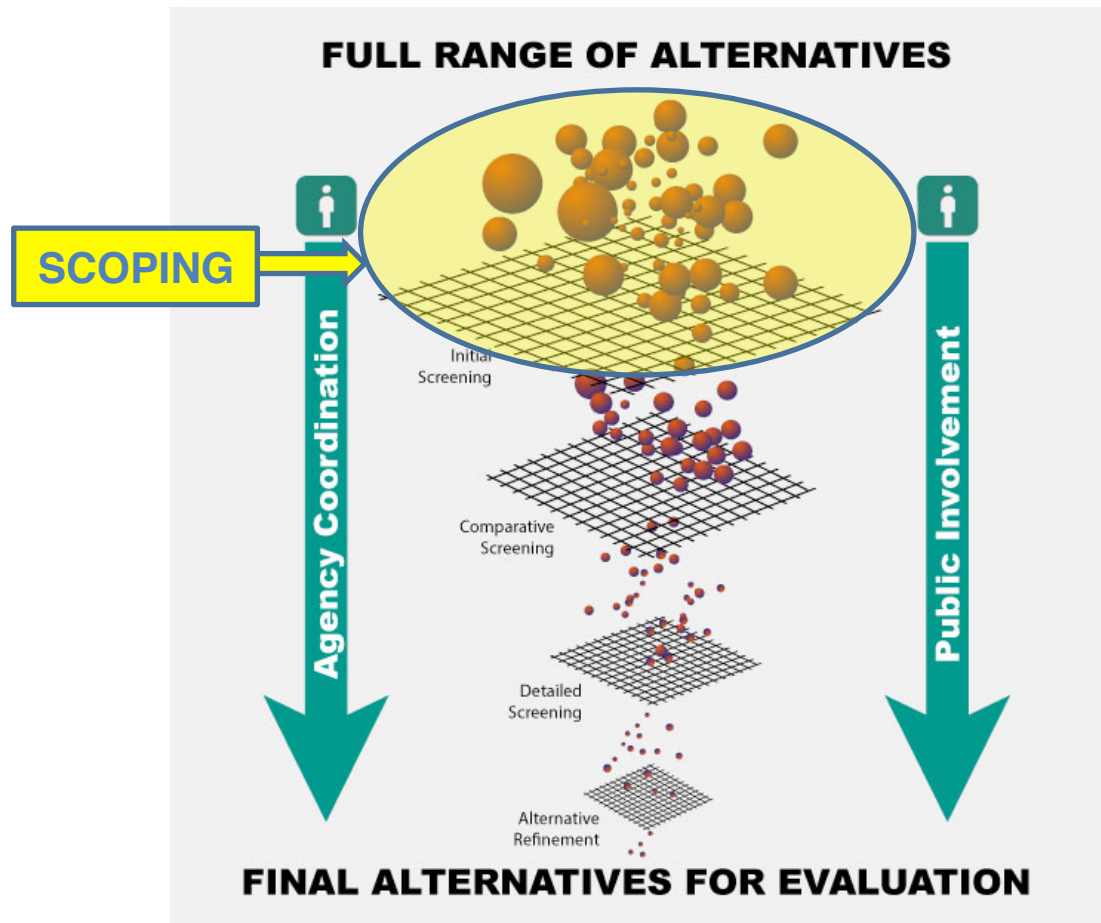


Scoping
Meetings
Week of
1/19/15

Scoping
Summary
Report
Mid-2015

So then what?

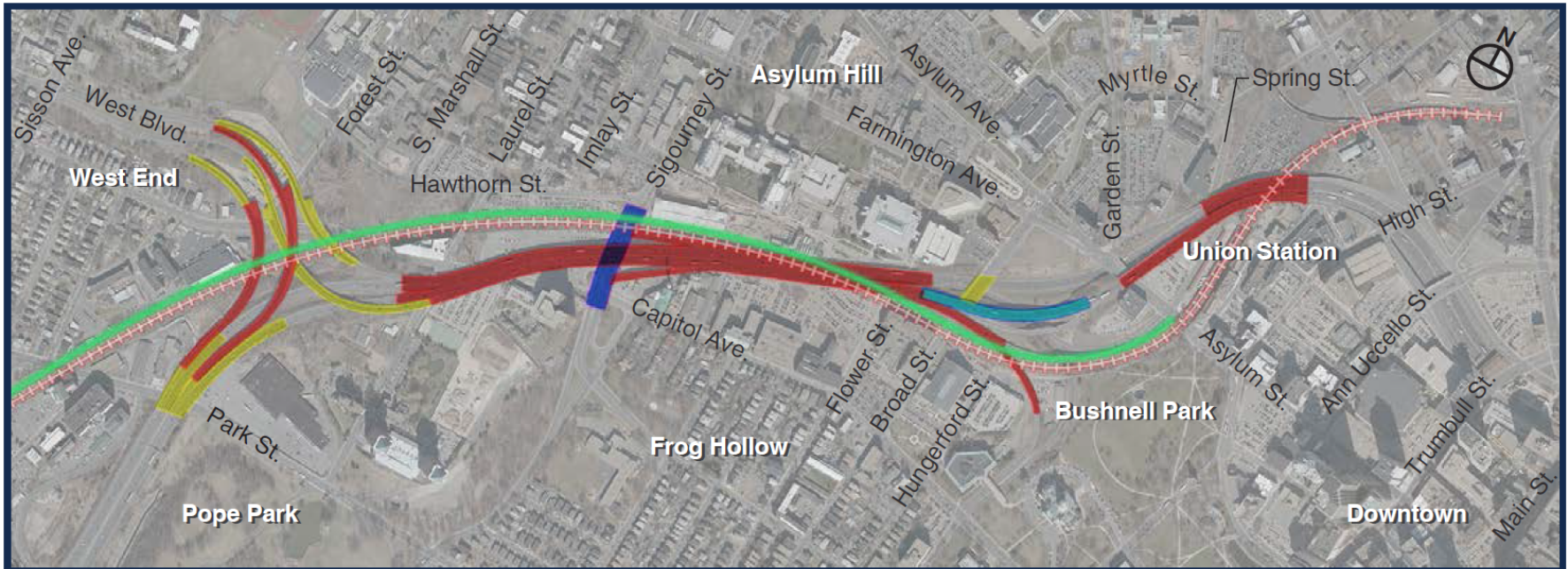
- Define initial set of alternatives
 - Test/evaluate
 - Get input
- Refine alternatives
 - Interchanges
 - Lanes/shoulders
 - Local streets
- Evaluate impacts
 - Traffic
 - Environmental
 - Public input





Preliminary Alternative 1

Preliminary Alternative 1:
No Build



Legend

- Substantial Bridge Replacement
- Bridge Rehabilitation
- Bridge Deck Replacement
- Bridge Superstructure Replacement
- CTfastrak
- Existing Railroad



Discussion on PA1

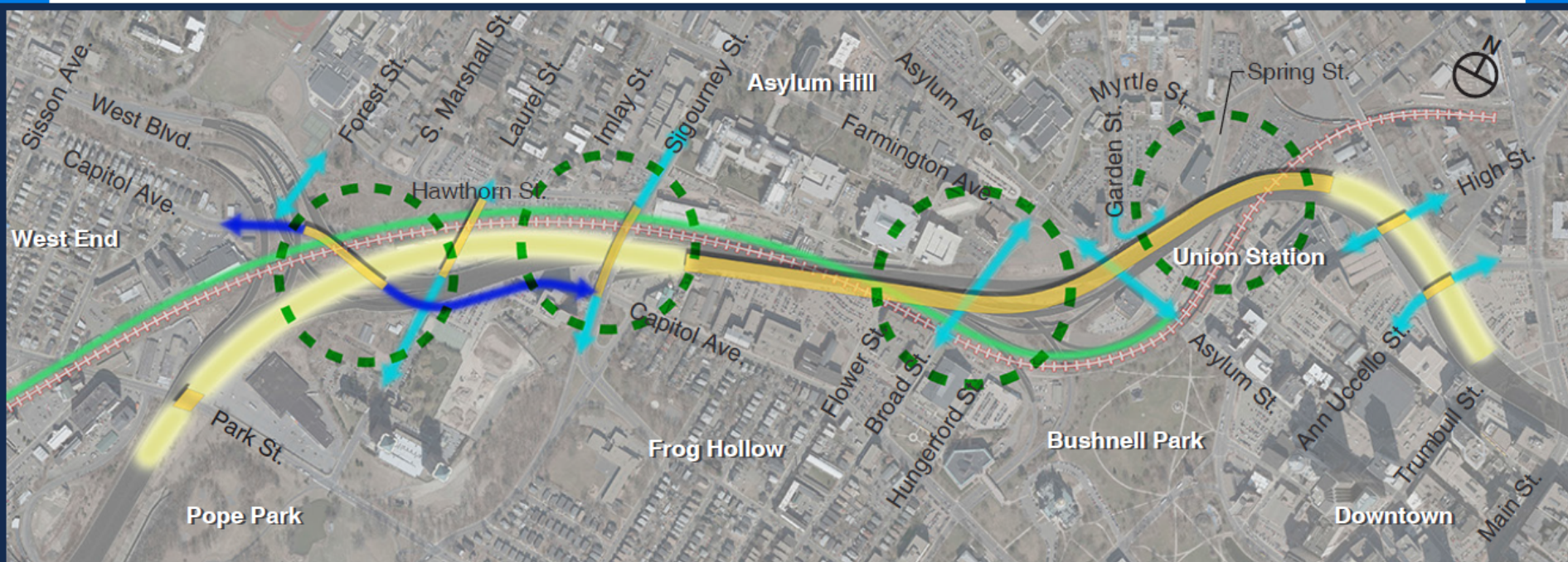
- What questions do you have about the alternative
- What do you like most/least relative to bike/ped/transit accessibility?
- What would change about the alternative?



Preliminary Alternative 2

Preliminary Alternative 2:

Rebuilt Elevated Highway



Legend

- Existing I-84
- Potential I-84 Alignment
- Bridges
- Potential Interchange Locations
- Revised Existing Local Street
- Potential New Local Street
- CTfastrak
- Existing Railroad



Discussion on PA2

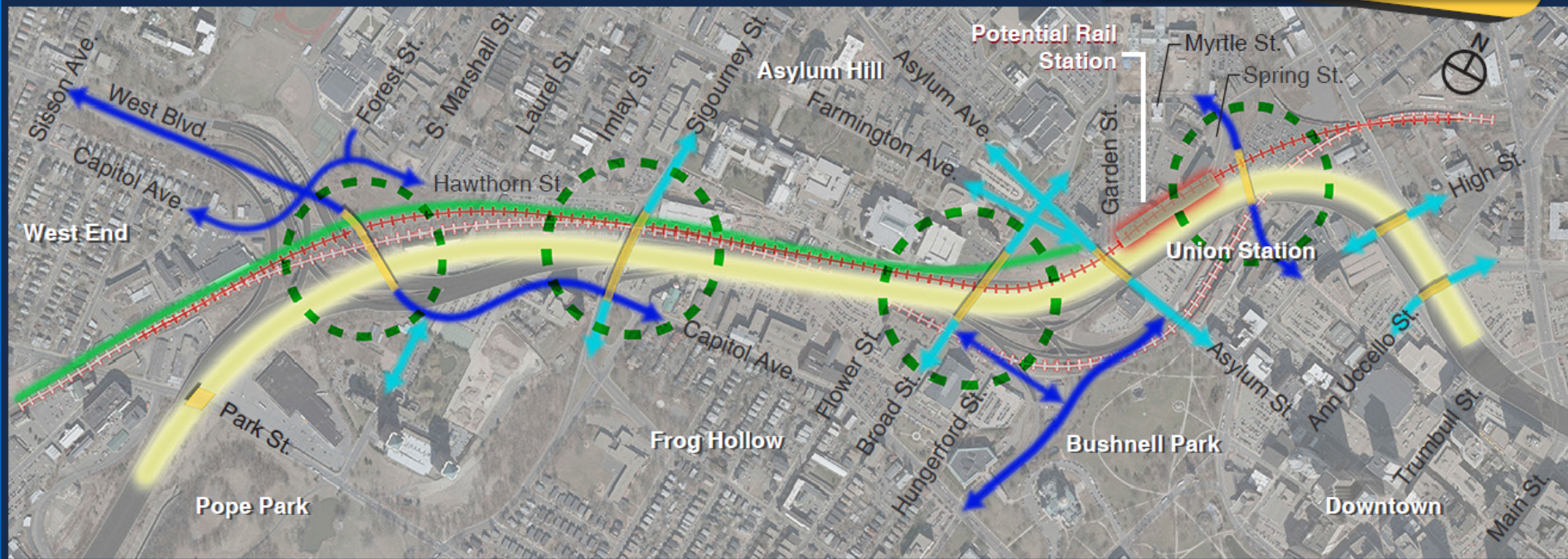
- What questions do you have about the alternative
- What do you like most/least relative to bike/ped/transit accessibility?
- What would change about the alternative?



Preliminary Alternative 3

Preliminary Alternative 3:

Lowered Highway



Legend

- Existing I-84
- Potential I-84 Alignment
- Bridges
- Potential Interchange Locations
- Revised Existing Local Street
- Potential New Local Street
- CTfastrak
- Existing Railroad
- Potential Rail Alignment



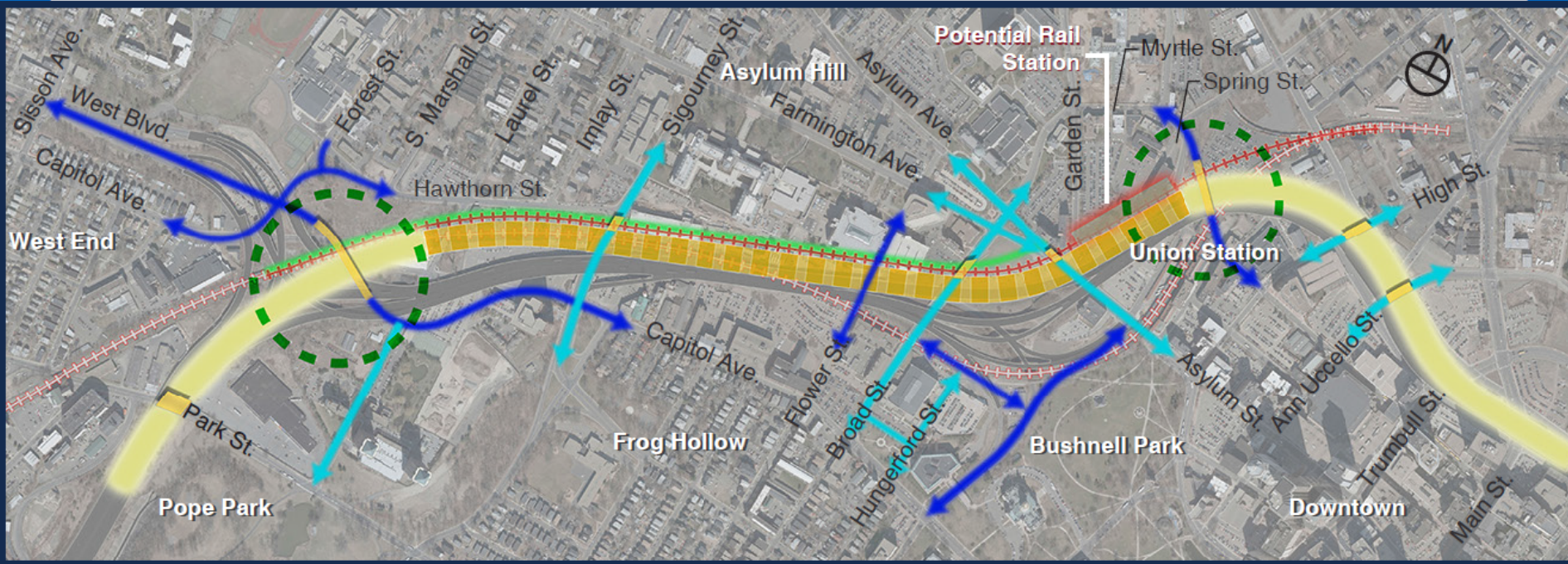
Discussion on PA3

- What questions do you have about the alternative
- What do you like most/least relative to bike/ped/transit accessibility?
- What would change about the alternative?



Preliminary Alternative 4

Preliminary Alternative 4: Tunneled Highway



Legend

- Existing I-84
- Potential I-84 Alignment
- Bridges
- Potential I-84 Tunnel
- Potential Interchange Locations
- Revised Existing Local Street
- Potential New Local Street
- CTfastrak
- Existing Railroad
- Potential Rail Alignment



Discussion on PA4

- What questions do you have about the alternative
- What do you like most/least relative to bike/ped/transit accessibility?
- What would change about the alternative?



Thank You!

We deeply appreciate your time and your commitment to helping us reach the best possible solution for the State, the region and the City.

Your I-84 Hartford Project Team